

# Three years of life-changing healthcare innovation across Europe



<b>Forewords . . . . .</b>	<b>03</b>
<b>Who are we . . . . .</b>	<b>04</b>
<b>Our mission . . . . .</b>	<b>24</b>
<b>Our achievements . . . . .</b>	<b>33</b>
<b>Real stories . . . . .</b>	<b>49</b>





**ALEX VON GABAIN**

CHAIRMAN OF THE SUPERVISORY BOARD



*Having been one of the founding board members of the European Institute of Innovation and Technology (EIT) since its beginnings in 2008, formed to enhance Europe’s ability to innovate, it has been a privilege to be at the forefront of driving the Research and Innovation agenda in the EU, and this is particularly true within the rapidly evolving space of healthcare. I started my own career as a researcher, then moved into academia, followed by starting my own commercial venture in healthcare, as such, my own trajectory very much mirrors the journeys of those that EIT Health supports and fosters.*

*Since its operational launch in 2016, it is with great pride that I have witnessed this organisation rapidly grow and evolve. We now have nearly 150 partners, working together to improve healthcare outcomes and the sustainability of our healthcare systems.*

*As we enter the next phase of our journey, we continue to harness the skills and expertise of the world’s leading healthcare players, creating one of the largest ecosystems devoted to improving lives in Europe.”*



**JAN-PHILIPP BECK**

CEO OF EIT HEALTH



*It has been my pleasure to lead EIT Health during this phenomenal growth phase. We are an organisation that plays a key role in connecting the healthcare needs of patients and citizens with our incredible network to deliver innovative solutions that can positively transform healthcare outcomes across Europe. Working closely with both EIT and the European Commission, we are making remarkable progress.*

*Since 2016, we have strengthened our operations, grown our membership, expanded our thematic areas and refined our processes to select the most exciting and innovative projects and businesses.*

*However there are big challenges in European healthcare today. Systems must respond to an ageing population and cost pressures. Chronic diseases and multi-morbidity cause an estimated economic loss of €115 billion per year, yet only around 3% of health budgets are spent on prevention.*

*Meeting this challenge won’t be easy; what this dynamic environment calls for are thought leaders and experts who can put ideas into action. We connect the right people and the right issues, to help a new generation of innovators and entrepreneurs to create new jobs and drive economic growth, scaling and transforming the way that healthcare is received and delivered.*

*New healthcare provision models and best practices will be shared across Europe, reducing barriers to implementation and facilitating large scale deployment of new solutions.*

*Our vision is that by 2022, EIT Health will be recognised as the leading European Health Innovation platform.”*





WHO ARE WE?

**Find out who EIT Health is,  
why we started and how  
we're structured.**



## ABOUT EIT HEALTH

Even the biggest ideas have the smallest of beginnings.

Backed by the European Union, EIT Health is about nurturing innovative, real-world health solutions and initiatives and creating an environment in which they grow and thrive.

EIT Health brings together the brightest minds from the worlds of business, research and education to answer some of the biggest health challenges facing our society today.

Leveraging the expertise of nearly 150 leading organisations including universities, pharma, medtech, research institutions and payers, we accelerate healthcare innovation by bringing together diverse sectors and stakeholders to collaborate openly.



**EIT Health brings together the brightest minds  
from business, research and education**



## ABOUT EIT HEALTH

**We identify:** We uncover the biggest unmet healthcare needs across Europe, then bring together the best and brightest minds to create solutions.

**We facilitate:** We support innovators with needs validation, business modelling, product testing and refinement, funding and access to investment and expertise.

**We collaborate:** We build strong links between industry, research, healthcare providers, the public sector and education to encourage collaboration.

**We create:** Our network creates new products and services to improve healthcare outcomes, as well as new businesses, jobs and valuable research.

**We educate:** We share knowledge and best practice to improve the skillsets of students, citizens, entrepreneurs and healthcare professionals.

**Ultimately, our work aims to help European citizens live healthier, longer lives**

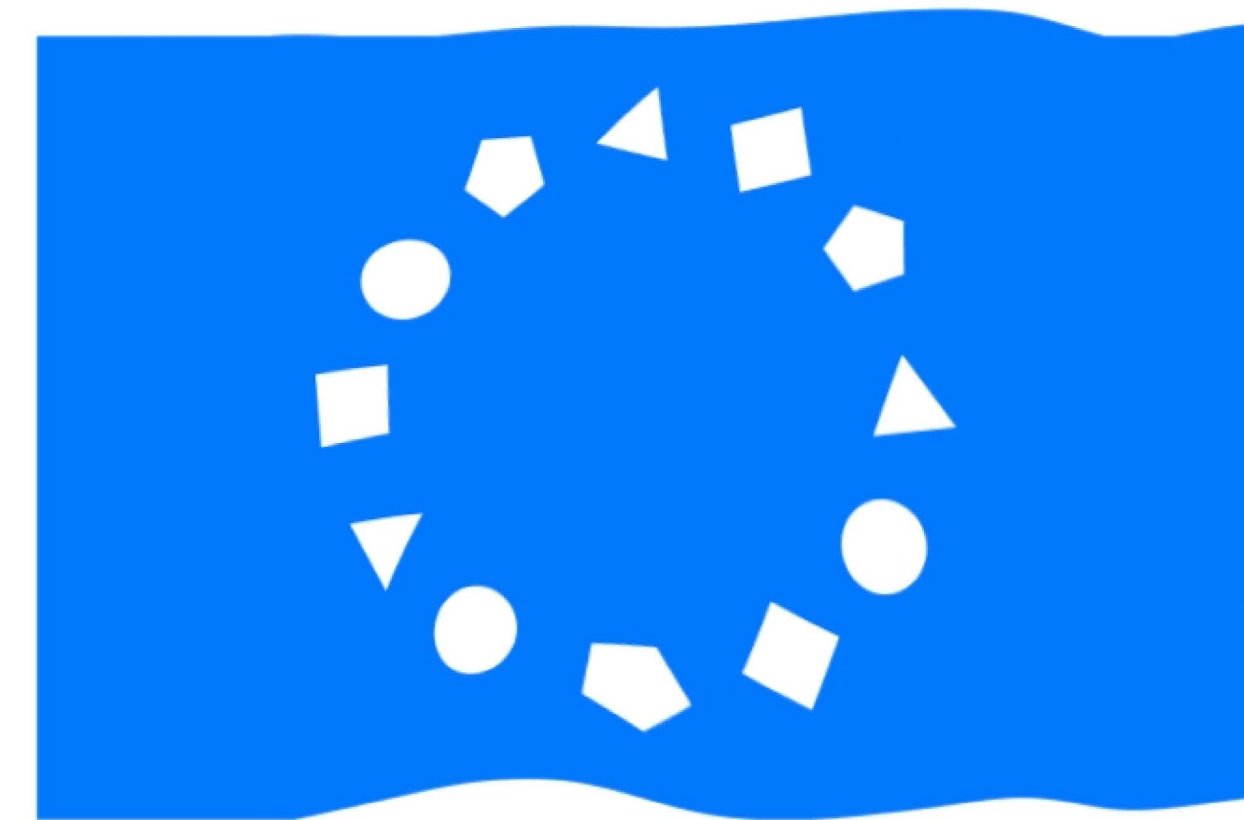


## WHERE DID IT ALL BEGIN?

Established in 2015, with the first full year of operation in 2016, EIT Health is a Knowledge and Innovation Community (KIC) supported by the European Institute of Innovation and Technology (EIT), an EU body created to find solutions to pressing global challenges. There was a need for the community to come together because EIT had an understanding that, in order to truly innovate to solve the problems affecting healthcare, we needed to do so in collaboration.

EIT is Europe's largest innovation network, bringing together more than 1,000 partners. The brainchild of former European Commission president José Manuel Barroso, EIT was set up in 2005 as a Europe-wide research powerhouse to rival the Massachusetts Institute of Technology (MIT).

EIT is an integral part of the European Union's Framework Programme for Research and Innovation. The Programme promises more breakthroughs, discoveries and world-firsts by taking great ideas from lab to market.



**EIT is Europe's largest innovation network, bringing together more than 1,000 partners**



## HOW ARE WE STRUCTURED?

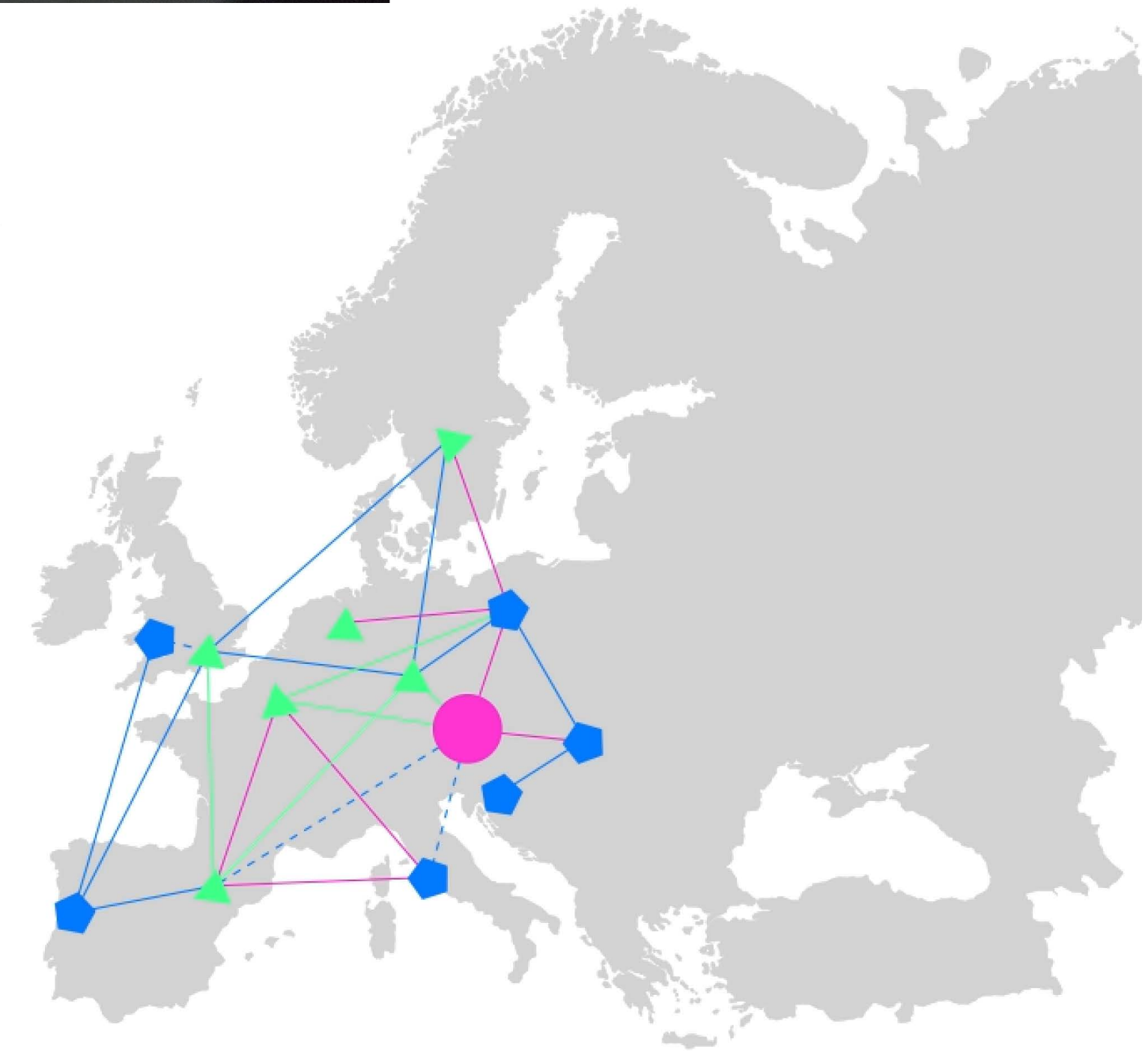
Headquartered in Munich, Germany, EIT Health has a pan-EU representation via six regional innovation hubs (called Co-Location Centres or CLCs) covering Belgium, France, Germany, Netherlands, Scandinavia, Spain, Switzerland, and the UK & Ireland. The Co-Location Centres work with strong clusters of relevant organisations collaborating as a thriving ecosystem. They operate as independent organisations connected to EIT Health.

The InnoStars are located in Hungary, Italy, Poland and Portugal and are

designed to bring together organisations from these more progressive regions where the overall pace of innovation is still moderate.

Another key initiative is the Regional Innovations Scheme, that connects leaders in healthcare innovation with areas with moderate innovators to share knowledge, best practice and resources.

Co-Location Centres and InnoStars work locally and collaborate across borders, offering infrastructure and intelligence.



**We connect leaders in healthcare innovation ...  
to share knowledge, best practice and resources**



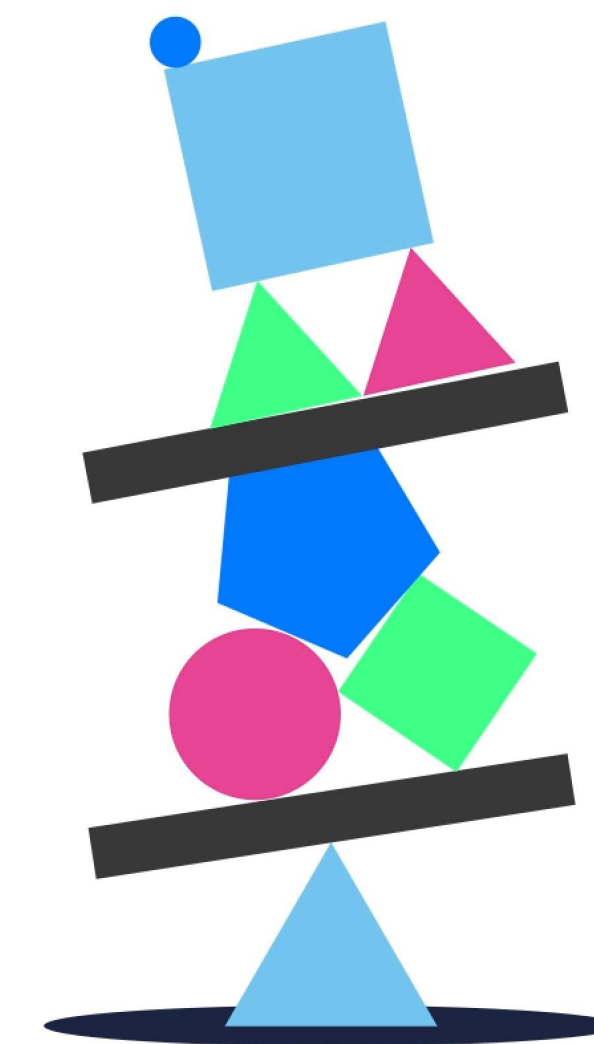
## PARTNERS

Building connections that did not exist before is integral to solving the biggest health challenges. Our network of nearly 150 partners includes public and private institutions across Europe, bringing together expertise in science, technology, education, business creation, innovation and access to citizens, patients and markets.

World-leading experts from academia, healthcare, social care and other relevant stakeholders combine and complement each other's strengths

and share collective assets. We host regular ideation and matchmaking events to encourage activities across borders, throughout Europe.

Together, we are jointly committed to achieving change.

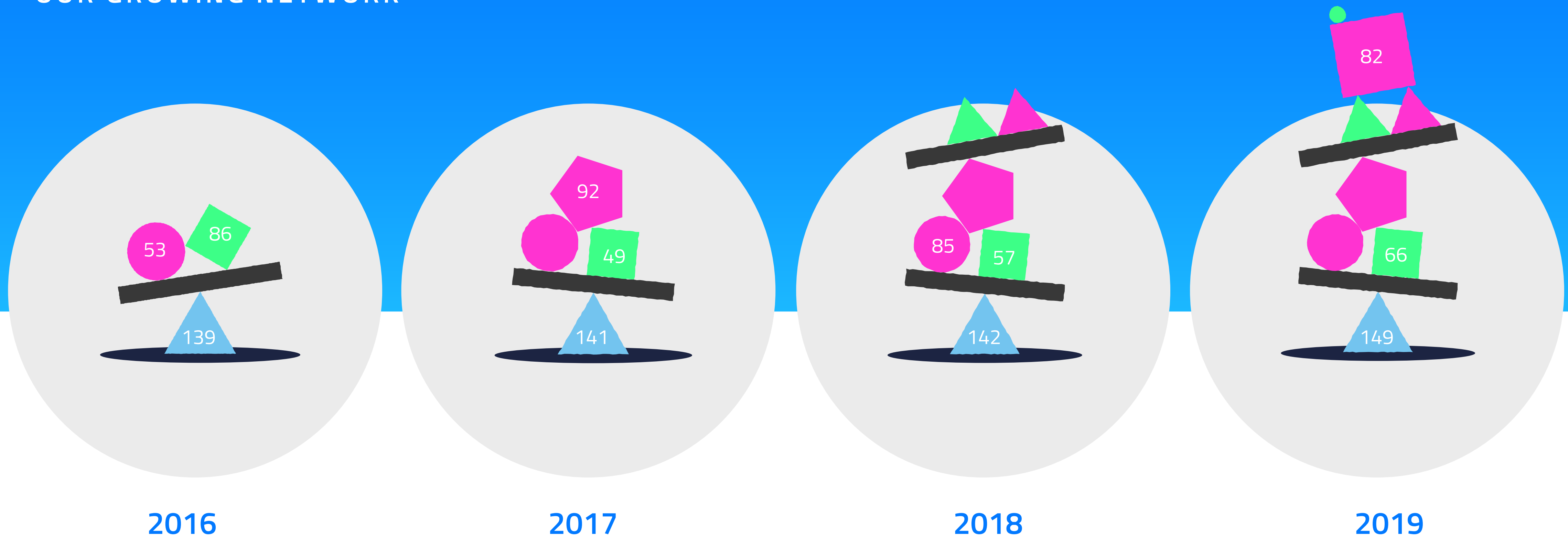


**In Reuter's Top 100: Europe's Most Innovative Universities 2019\*, our partners account for 48% of the top 25 and 100% of the top 5**

\*fourth annual ranking



## OUR GROWING NETWORK



**Core partners**  
Formal members of EIT Health and have voting rights in its Partner Assembly (PA). Each has activities in at least two segments of the knowledge triangle, is active at EU-level and contributes substantially to the financial sustainability of EIT Health.

**Associate Partners**  
Connected to the CLCs and InnoStars and are members of the relevant partner assemblies as well as the PA where they jointly exercise one vote through a delegate/CLC.

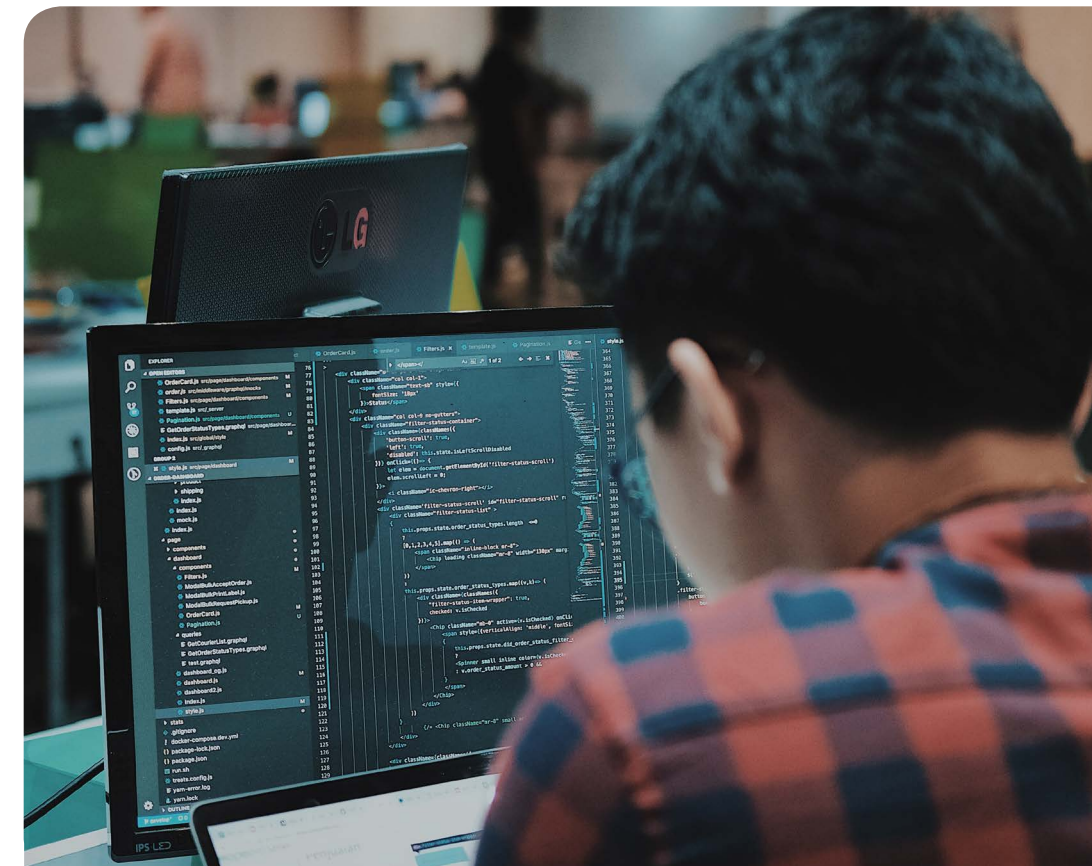
**Total**





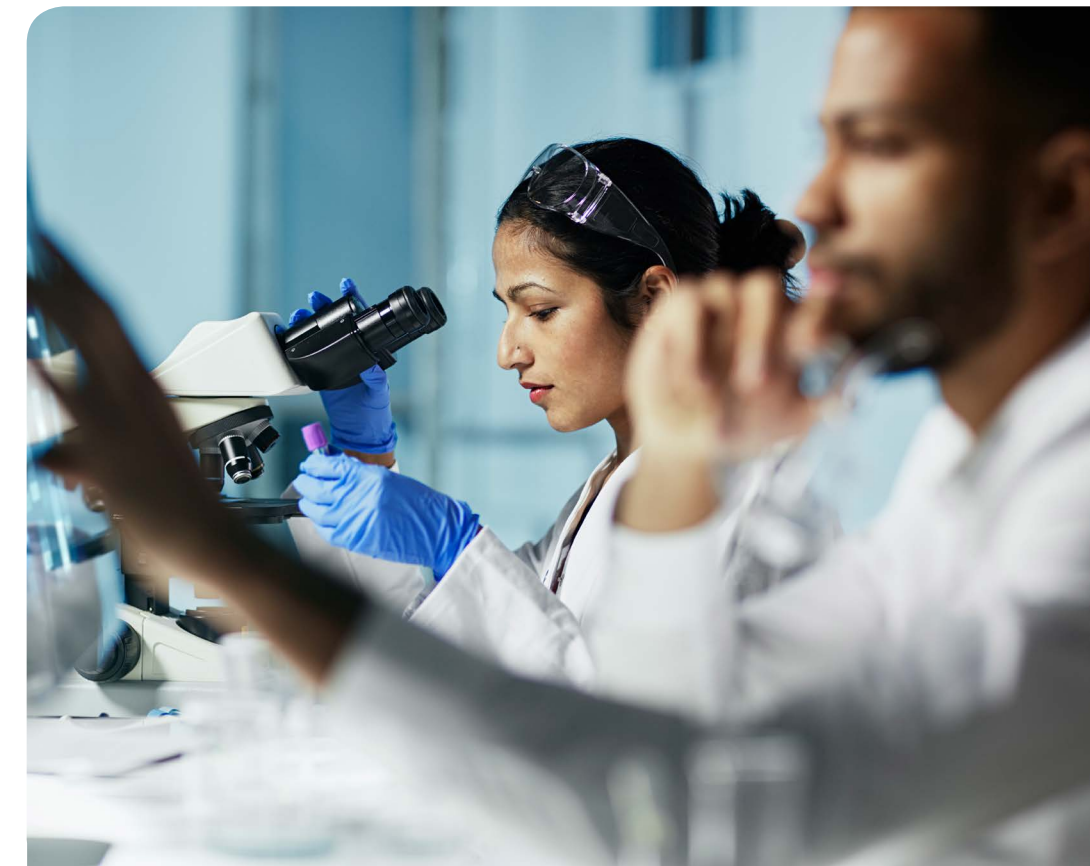
## CORPORATE INNOVATION

The world's leading and most innovative companies. With a cumulative R&D spend of more than €35 billion per year and a combined total of nearly 1.3 million employees.



## FINANCIAL COMMUNITY

Banks, venture capital and business networks with a focus in the health sector.



## EDUCATION AND RESEARCH

Top-ranked medical, engineering and technology universities as well as business schools, helping accelerate research and attract the world's best talent.

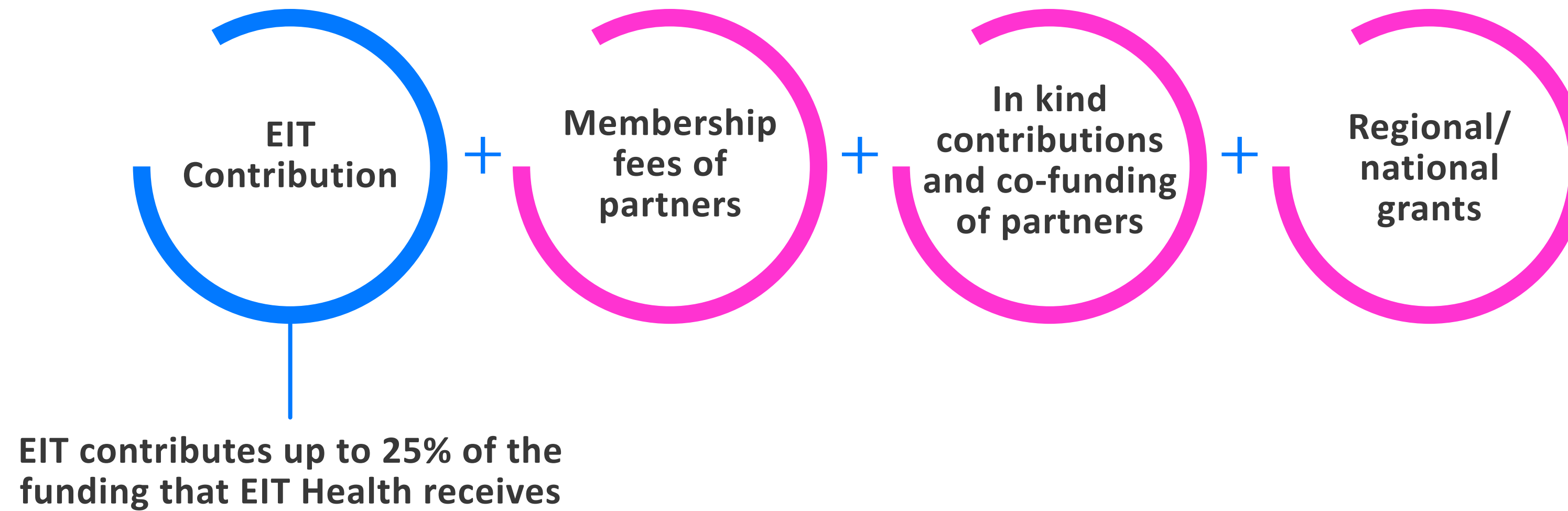


## HEALTH AND SOCIAL CARE PROVIDERS

Top European public and private health-care providers, and public and university hospitals which together treat more than 17 million patients annually.



## OUR FUNDING

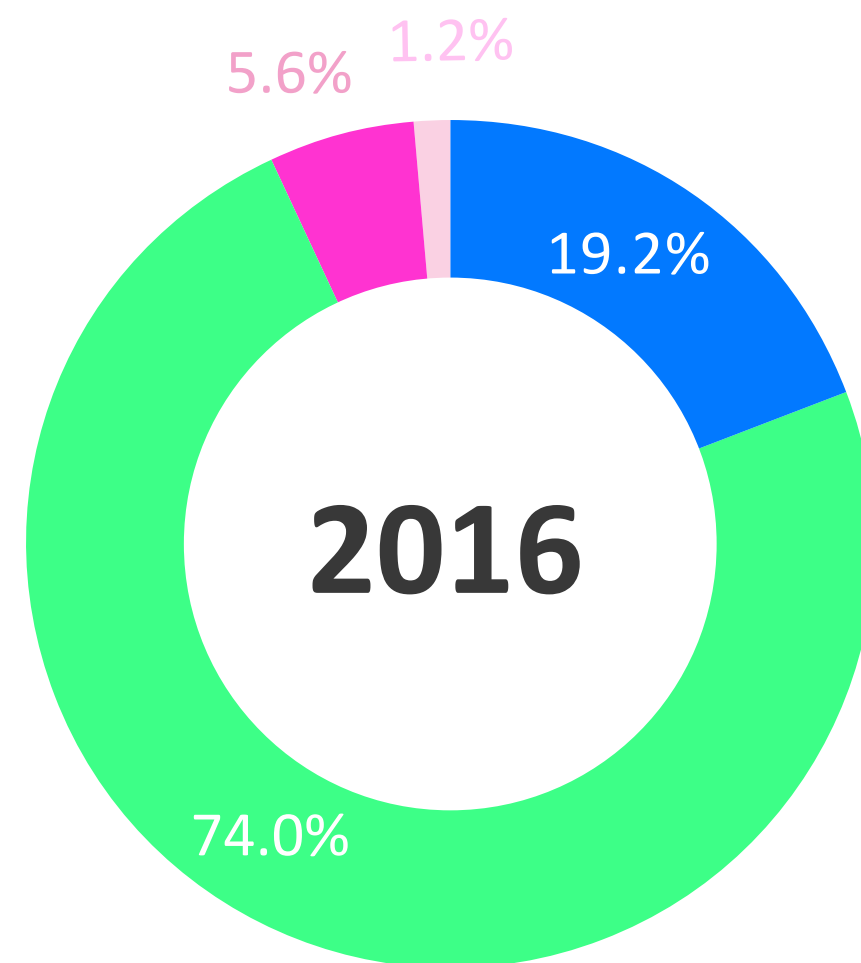


We implement a lean, sustainable and demand-driven governance model and have put in place incentives to ensure minimal administrative costs, transparency, efficiency, agility and connectivity. We are developing strategies to ensure the sustainability of our operations beyond the 2022 period.



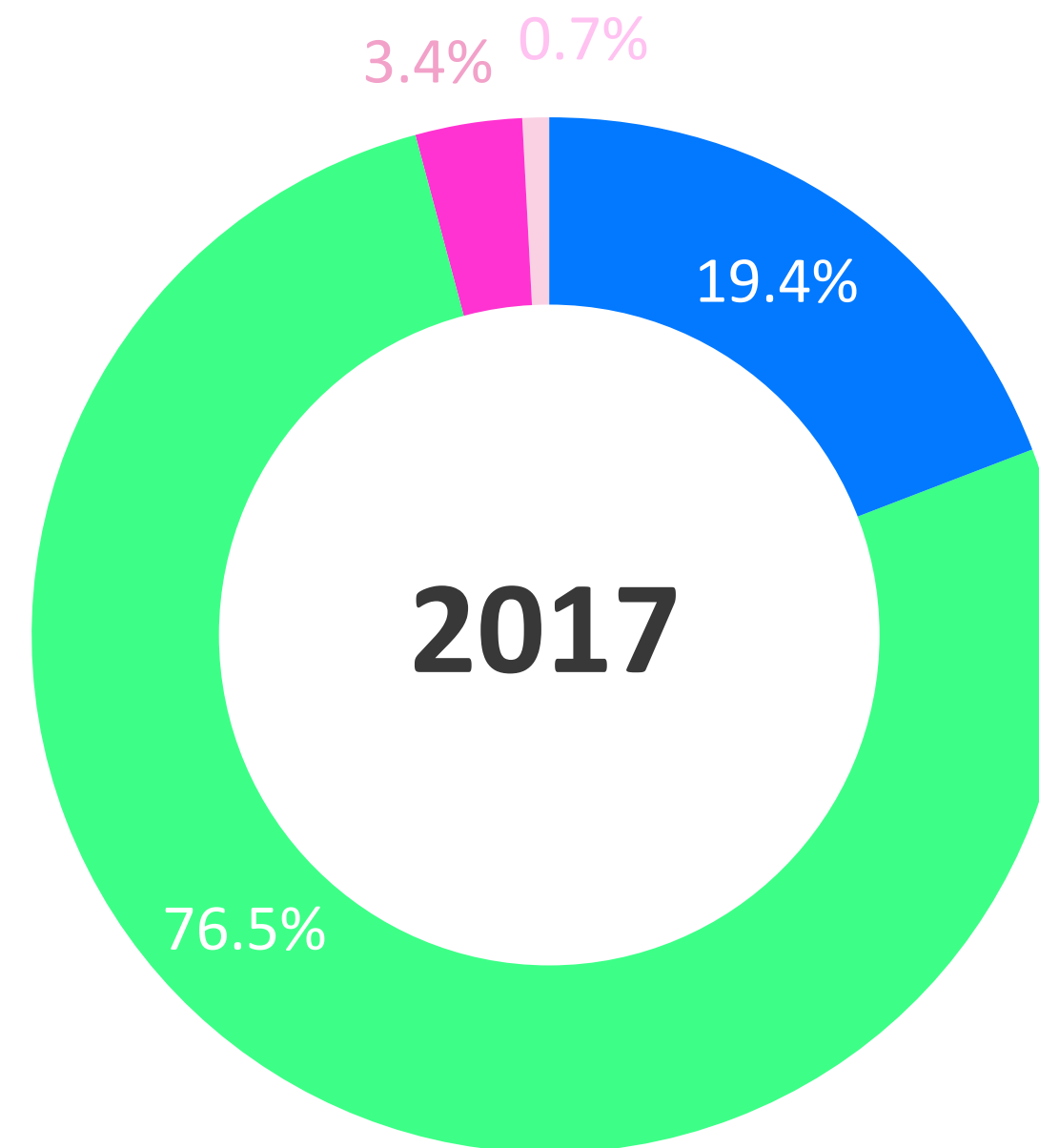
## OUR CONTRIBUTIONS

- EIT contribution
- In kind contributions and co-funding of partners
- Membership fees of partners
- Regional/national grants

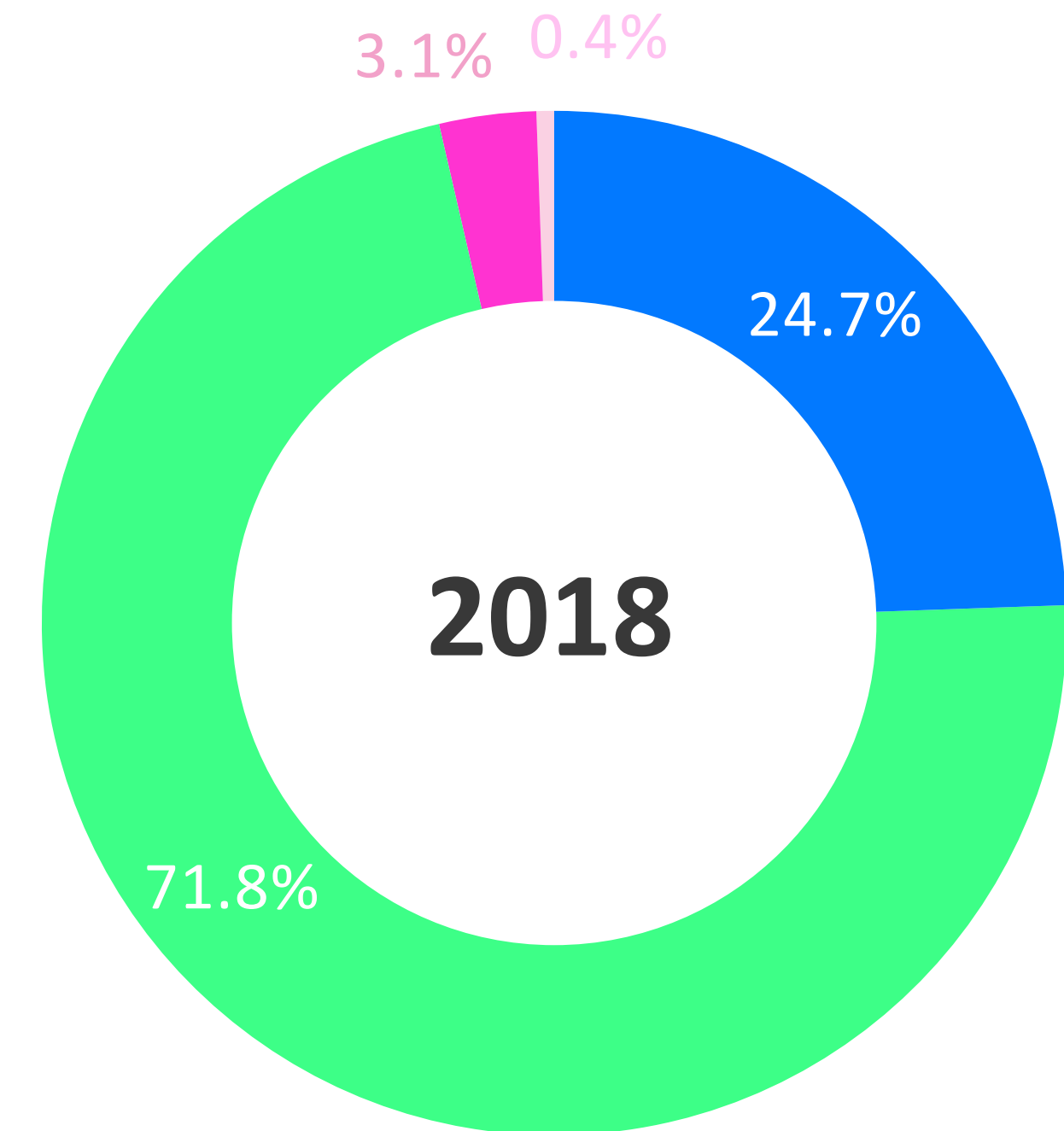


Total Cost of  
our Projects:

104,544



171,461



209,475



## MANAGEMENT AND ORGANISATION

EIT Health is structured to ensure that the whole community is fairly represented during decision making processes, such as building of the Business Plan and allocation of funds, whilst also ensuring we have effective governance in place and control for any conflicts of interest.

The highest body of our organisation is the Partner Assembly, which has elected a Supervisory Board, that controls the Management Board. The Chair of the Supervisory Board is

independent and not affiliated with any of the Partners. Members of the Supervisory Board are elected by the CLC and InnoStars boards and there is one industry and one non-industry Supervisory Board partner per CLC and two representatives from InnoStars.

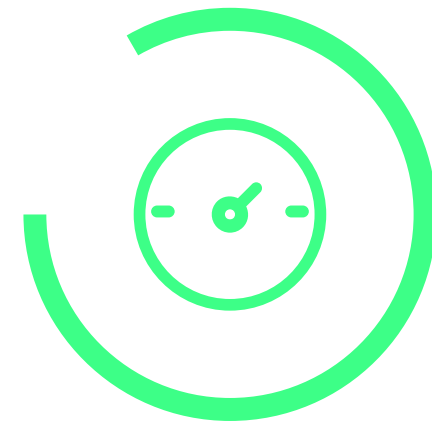
The CEO, COO, Director of Finance, Director of External Affairs, three programme Directors and the CLC/ InnoStars Directors are part of the Management Board.



**EIT Health is structured to ensure that the whole community is represented during decision making processes**



## OUR PROGRAMMES



## CAMPUS

**Campus** is the education incubator of EIT Health, providing up-to-date knowledge, skills and attitudes to help turn the brightest learners into healthcare leaders and entrepreneurs, who will shape the future of Europe's health. Innovative educational offerings are intended to increase industry knowledge and deliver novel skills to meet the future needs of the healthcare workforce, as we seek to inject an entrepreneurial approach into European healthcare education.

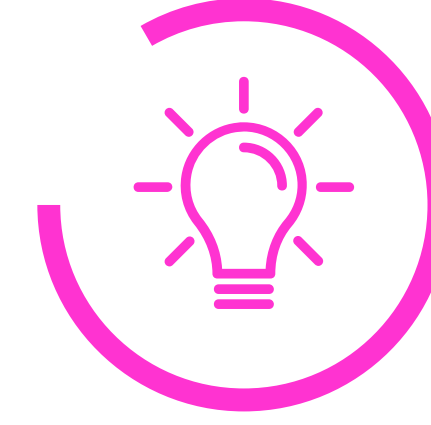
We are also committed to empowering patients to manage their own healthcare more effectively through targeted learning programmes.



## ACCELERATOR

**Accelerator** is a business creation programme, set up to support the best and brightest health entrepreneurs, providing skills and services to get promising business ideas to market. Support for healthcare entrepreneurs is provided at every stage of the process:

- We **incubate** ideas, for future entrepreneurs or scientists wanting to develop start-ups
- We **validate** concepts, enabling entrepreneurs to means-test products
- We **scale** businesses, nurturing growth in more mature start-ups and SMEs to support the attraction of investment



## INNOVATION

The **Innovation** programme provides comprehensive support for innovators developing a product or service with a high potential for societal and economic impact. The most promising ideas are developed into commercially-viable products through a multi-disciplinary approach, involving business, medicine, IT and other fields of knowledge.



## THINK TANK

Formally launched in 2018, the EIT Health **Think Tank** is a forum for thought leaders to collaborate to shape the healthcare environment by identifying the barriers and opportunities for healthcare innovation. As well as trend and evidence assessment and analysis, pan-EU and regional discussions take place in roundtable meetings to help outline a number of actions and recommendations, improving healthcare system efficiency.



## WILDCARD PROJECTS

Wild Card is a call to action for Europe's innovators to solve the biggest healthcare challenges of our time.

Focusing on applied research, entrepreneurial ideas and innovative thinking, Wild Card takes a venture-building approach that identifies, fosters and helps develop high-risk ideas into thriving commercial businesses. Through this unique programme, EIT Health offers

advice from world class mentors and business coaches to equip participants with the knowledge and expertise necessary to start on the right path; supports and accelerates the formation of skilled and ambitious teams by facilitating connections with other likeminded innovators and funds these teams on their journey, from ideation to start-up incorporation.



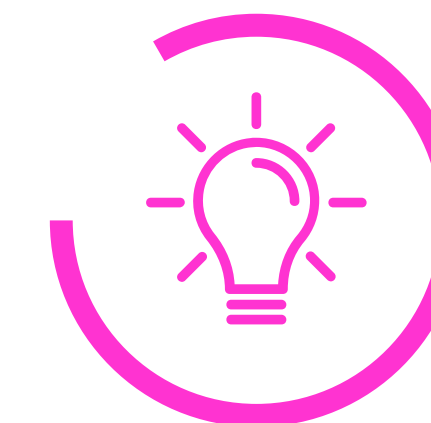
**Wild Card is a call to action for Europe's innovators to solve the biggest healthcare challenges of our time**



## THINK TANK

The 2018 **Think Tank** focussed on “The Use of Existing Big Data to Improve Healthcare”, exploring how to harness the power of data to support healthcare advancements and ultimately improve outcomes.

In 2019 the **Think Tank** focus is “Optimising Innovation Pathways: Future Proofing for Success”, which aims to assess the routes available for innovators and entrepreneurs taking ideas through to commercial success.

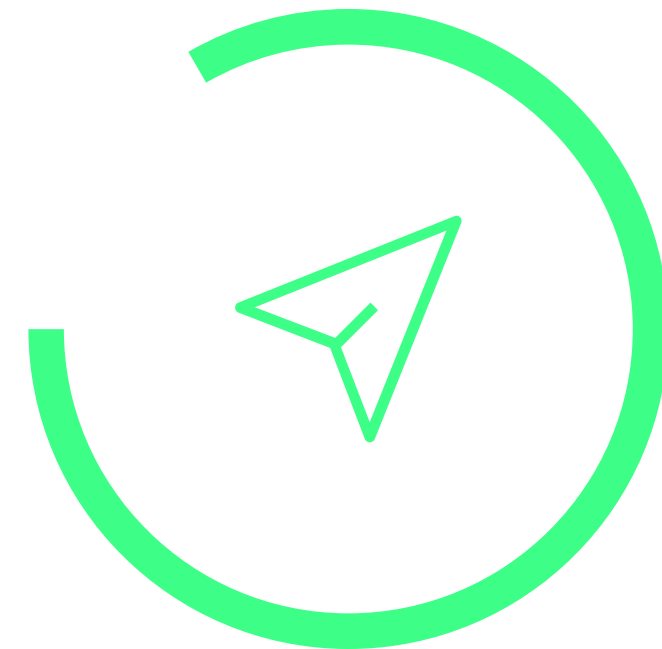


Think Tank is a forum for thought leaders to collaborate to shape the healthcare environment



## EVALUATION PROCESS FOR PROJECT FUNDING

To develop both programmes and start-ups that aim to address the most relevant healthcare challenges, there is an annual call for proposals followed by a rigorous, fair and transparent evaluation process. Only entities from the European Union (EU) are eligible to participate in EIT Health-funded projects.



EIT Health members submit proposals that demonstrate innovative approaches to tackle defined healthcare challenges.

Proposals may include partners who are not members of the network, such as small and medium-sized enterprises (SMEs).



A competitive evaluation process defines which proposals are selected to populate the EIT Health annual Business Plan. This includes an assessment of the identified specific unmet need(s), defined and measurable objectives that aim to benefit healthcare outcomes for patients and citizens, overall excellence and an effective implementation plan.

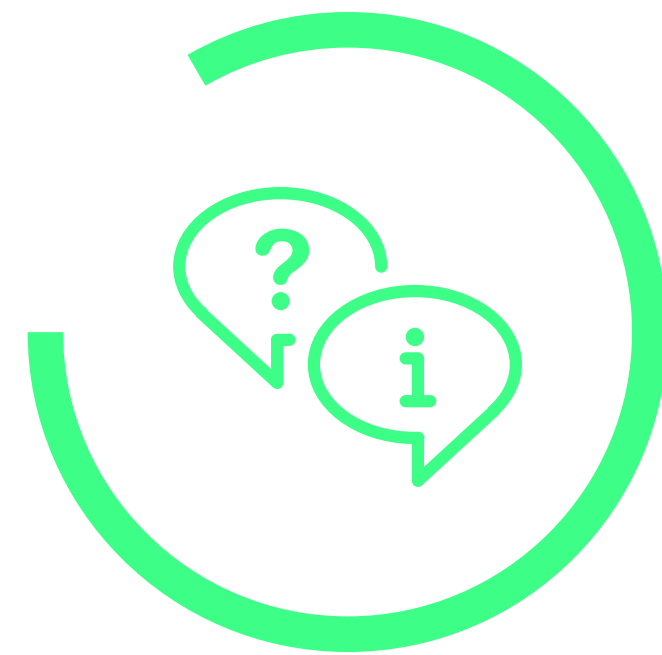


## CITIZEN ENGAGEMENT

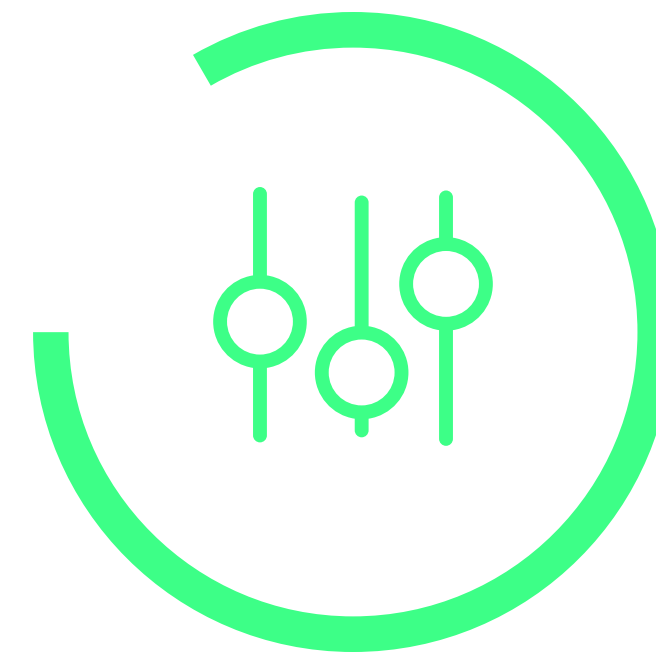
We empower citizens to manage their own health by:



Co-creating with citizens, who can also give early feedback and market validation as end users of the products and services we develop.



Forming communities, providing information, advice and learning.



Co-operating with citizens to create better organised data, which can lead to better, more personalised healthcare.





## CRISH

(Co-Creating Innovative Solutions for Health)

CRISH is a training course that teaches the public and professionals how to work together to co-create innovation for health. The co-creation approach being taught involves patients and their informal caregivers (family members) in the innovation process and allows them to learn how they can participate at key time points (research, for example) by sharing their experiences and ideas with other stakeholders, so that innovations better reflect the needs of patients and citizens.



## EIT HEALTH ALUMNI

We support the creation of a network of students, professionals and entrepreneurs in the health sector to provide training and career opportunities, aimed at enhancing our wider community and spur healthcare innovation in Europe. Since the launch of the registration in June 2017, the number of registered alumni has quickly soared to 871 members in only its second year of existence.

Along with job offers, mentoring activities and workshops, EIT Health Alumni provides an attractive platform for start-ups and newcomers to promote their businesses and get in touch with potential partners in their respective environments.



**We support the creation of a network of students, professionals and entrepreneurs in the health sector**



## ANNUAL SUMMIT

Our annual EIT Health Summit brings together representatives from the entire EIT Health community, including partners and key leading external healthcare leaders and decision makers. The events showcase our projects and programmes and allow for greater interaction and networking alongside a programme of presentations, plenary sessions and working groups.

By 2024, we aspire for the EIT Health Annual summit to be in the top five 'must attend' events in the European health innovation calendar.

Attendees will come for the compelling and relevant content and stay for the opportunities to network and learn.

### 2016

Barcelona, 23–24 November, 347 participants

### 2017

London, 4–5 December, almost 400 participants

### 2018

Lodz, 2–3 December, almost 450 participants

**Our annual EIT Health Summit brings together representatives from the entire EIT Health community**



## EIT HEALTH PARTNERS: LEADING ORGANISATIONS DRIVING HEALTH INNOVATION IN EUROPE

- Aachen Universitätsklinikum
- Abbott
- AbbVie
- Achmea
- Air Liquide
- Altran
- Amgen
- Angels Sante
- AQuAS
- Assistance Publique Hôpitaux de Paris
- AstraZeneca
- ATOS
- Barcelona Inst Science & Tech
- Barco
- Bayer
- Becton-Dickinson
- Beiersdorf
- Bio Innovate
- Bio M
- BIO NRW
- Biocat
- bioMérieux
- Birmingham University
- Hospitals NHS
- Bluepharma
- Budapest University of Technology and Economics
- Bull
- Caixa
- CapDigital
- Capital Region of Denmark
- CEA
- Celon Pharma
- Centro Hospitalar e Universitário de Coimbra
- Centro Hospitalar Lisboa Norte
- City of Rotterdam
- Colruyt Group
- Comarch
- Copenhagen Business School
- CRU Hungary
- E-Group
- EPFL Lausanne
- Erasmus MC Rotterdam
- Erlangen Universitätsklinikum
- E-Seniors
- Essilor
- ETH Zürich
- EURAPCO
- FAU Erlangen-Nürnberg
- Fondation Asile des Aveugles
- Fondation de l'Avenir
- Fraunhofer Gesellschaft
- GE Healthcare
- Genesis Biomed
- German Centre for Diabetes Research (DZD)
- GLINTT
- GMV
- Gothaer Insurance
- Grenoble Ecole de Management
- Groningen University Medical Centre
- Heidelberg Universitätsklinikum
- Home Instead Senior Care
- Hospital Clínic de Barcelona
- Hospital Sant Joan de Déu
- IESE
- IMEC
- Imperial College Health Partners
- Imperial College London
- Inria
- INSERM
- Inst Mines-Telecom
- Institut Biomecánica Valencia
- Institut Català de la Salut
- Institut de Cancerologie Gustave Roussy
- Instituto Pedro Nunes
- Instytut Nofera
- Italian Institute of Technology
- Janssen-Cilag
- Karolinska Institute
- KENUP Foundation
- KIT
- Klinikum Rechts der Isar München
- KTH Royal Institute of Technology
- KU Leuven
- Lancashire Care NHS Foundation Trust
- Leiden University Medical Center
- LEITAT
- Leyden Academy
- Lode Holding
- Maastricht University Centre
- MADoPa
- Medical University Lodz
- Medical Valley
- Medicen
- Medtronic
- Merck
- Merck Sharp & Dohme
- Miltenyi Biotec
- Nestec
- Nordson Medical
- NovoNordisk
- Oxford University Hospitals NHS
- Parc Sanitari SJD
- Philips
- Politenical University of Madrid
- Profil
- Quiron Prevencion
- Region Skane
- RISE Sweden
- Roche Diagnostics
- RWTH Aachen
- Sanofi
- SAP
- SDN
- SEB
- Semmelweis University
- SERMAS
- Servicio Andaluz de Salud
- Siemens Healthineers
- Sorbonne Université
- Stockholms City
- Stockholms Läns Landsting
- SynLab
- Tartu University Hospital
- Technical University of Denmark
- Technion
- Tecnia
- The Newcastle upon Tyne Hospitals NHS Foundation
- Trust
- Thermo Fisher
- TNO
- Trinity College Dublin
- TU Delft
- TU München
- TU/e Eindhoven
- UCB
- Universität Köln
- Universitätsklinikum Köln
- Université Grenoble Alpes
- University of Barcelona
- University of Cambridge
- University of Coimbra
- University of Copenhagen
- University of Evora
- University of Gent
- University of Heidelberg
- University of Lisbon
- University of Luxembourg
- University of Maastricht
- University of Napoli
- University of Newcastle
- University of Oxford
- University of Tartu
- University of Uppsala
- Uppsala City
- Uppsala County Council



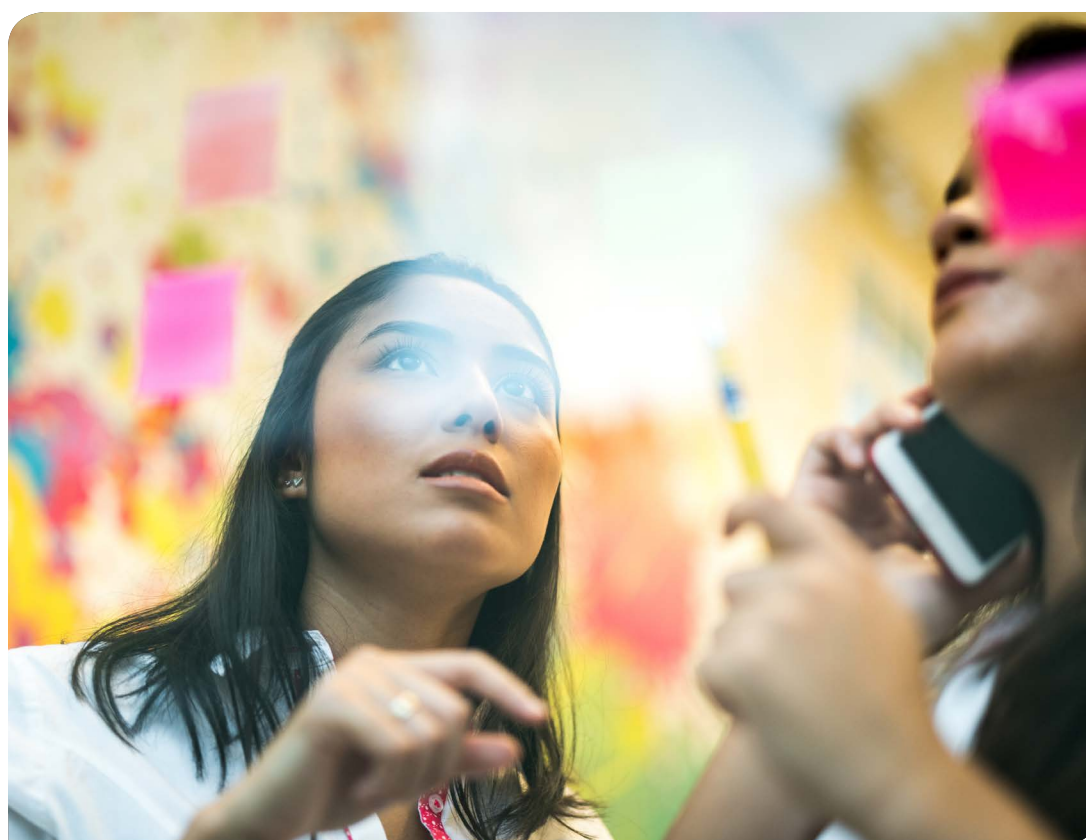


## OUR MISSION

**Find out why we exist,  
and the major healthcare challenges  
we're trying to solve.**



## EIT HEALTH GOALS



### STRENGTHEN HEALTHCARE SYSTEMS IN EUROPE

By overcoming fragmentation, addressing broad challenges, increasing efficiency and breaking down barriers.



### PROMOTE BETTER HEALTH OF CITIZENS

Through our products, shared research, and educational activities, we seek to promote healthy living and active ageing.



### CONTRIBUTING TO A SUSTAINABLE HEALTH ECONOMY IN EUROPE

By bringing innovative ideas to market, we help create new jobs, benefiting the health economy and citizens.



## SOCIETAL CHALLENGES

Over the past 150 years, average life expectancy has increased by approximately 4-5 years per generation. This is a tremendous advance but we face new challenges, including an ageing population and a rise in chronic illness, increased costs of healthcare delivery, and entrenched social and healthcare systems with slow pace of change and adaptation.

However, through prevention and new approaches in treatments and healthcare delivery, we all can live healthier lives for longer.

In parallel, a number of potentially disruptive forces can impact the provision of health and represent opportunities for growth creation:



**Through prevention and new approaches in treatments and healthcare delivery, we all can live healthier lives for longer**





# SOCIETAL CHALLENGES

## TECHNOLOGY

- Scientific and technological breakthroughs, such as robotic surgery and molecular medicine
- Big data generated in health

## LIFE SCIENCES AND MEDICAL TECHNOLOGY

- Focus on improving outcomes at every stage that care is provided
- Patient-centric solutions and data-driven insights

## TELECOMS

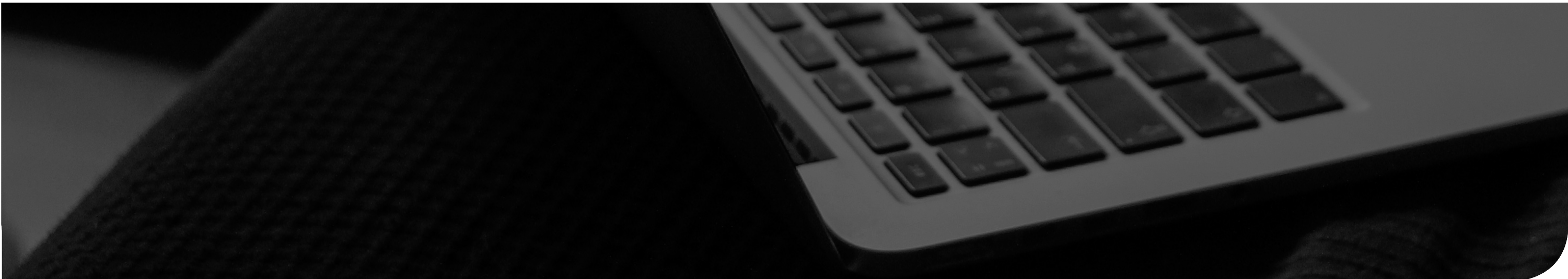
- Better communication and diagnostics
- Growth of telemedicine, such as Skype GP appointments
- Telehealth. e.g. remote patient monitoring

## GOVERNMENT AND PAYERS

- Insurance products for all health-related matters, such as primary care, long-term care and end of life
- Increased use of behavioural economics – using psychological insights to better understand decisions
- Different reimbursement models, including prevention

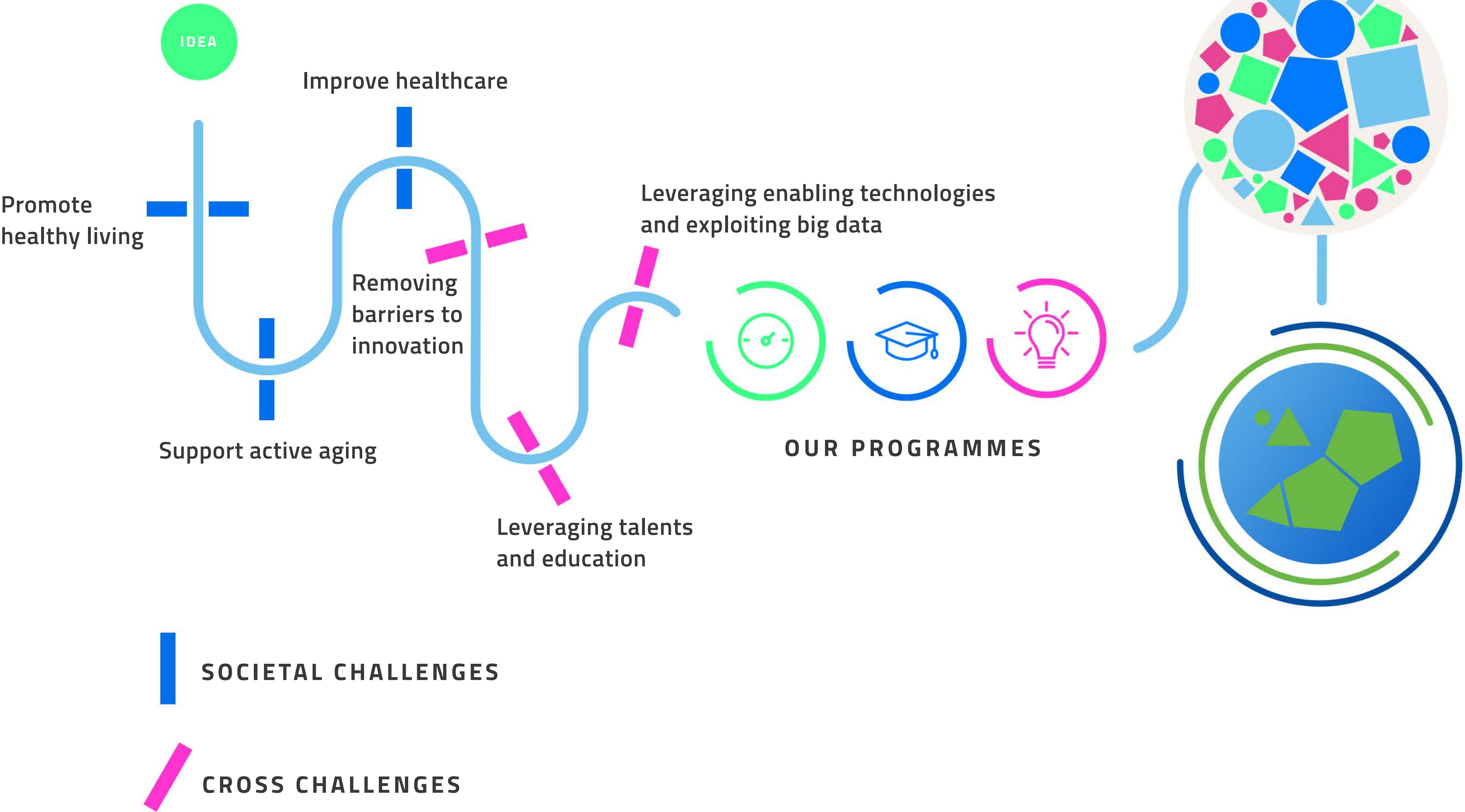
## CONSUMER PRODUCTS

- Wearable products
- Retail and consumerism – increasing consumer knowledge of choice and expectation of value from HCPs
- Payers directly engaging customers





FROM CHALLENGES TO MEANINGFUL OUTCOMES



IMPACT

- Successful start-ups
- Economic growth
- Better trained personnel and new jobs
- Globally competitive European industry
- Faster market access and diffusion of innovative products and services

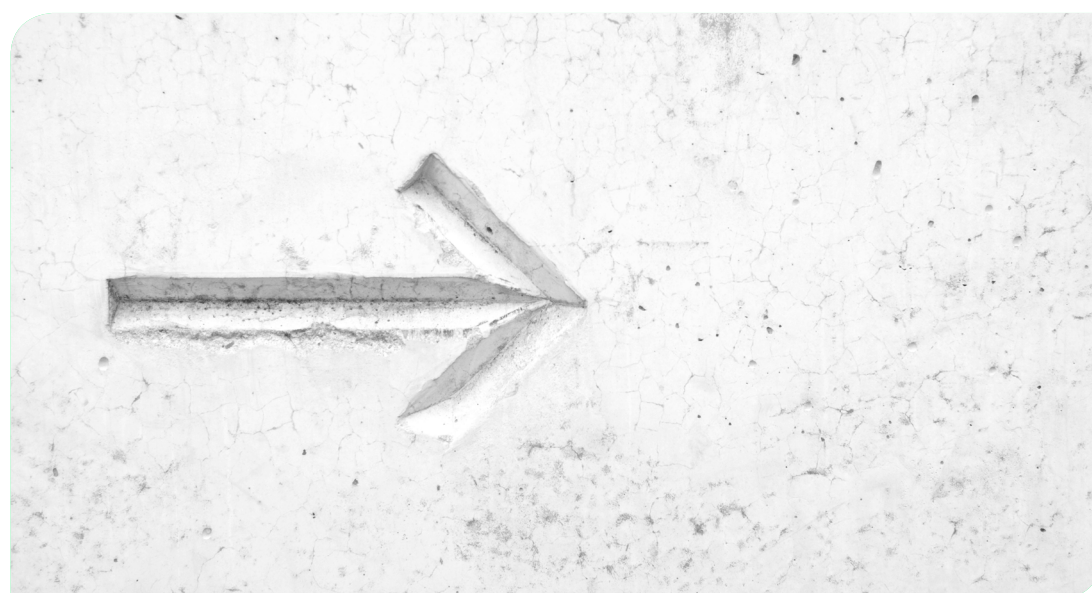
SOCIETAL OUTCOMES

- Better quality of life
- Citizens enabled to take better ownership of their health
- Empowered citizens to take choices for longer active and social lives
- Improved patient pathways, cost-effectiveness, sustainability and quality of healthcare
- Stronger innovation ecosystems at Regional centres and InnoStarts



## OUR SIX FOCUS AREAS

In 2018, six focus areas were established as a framework for directing our funding decisions and securing long-term sustainability.



### 1. REFORM CARE PATHWAYS

From diagnosis to recovery, care pathways are essential but current strategies focus heavily on the treatment phase. We want to extend care pathways so they are initiated earlier as preventative action before the onset of disease, and extend further to address multiple chronic diseases.

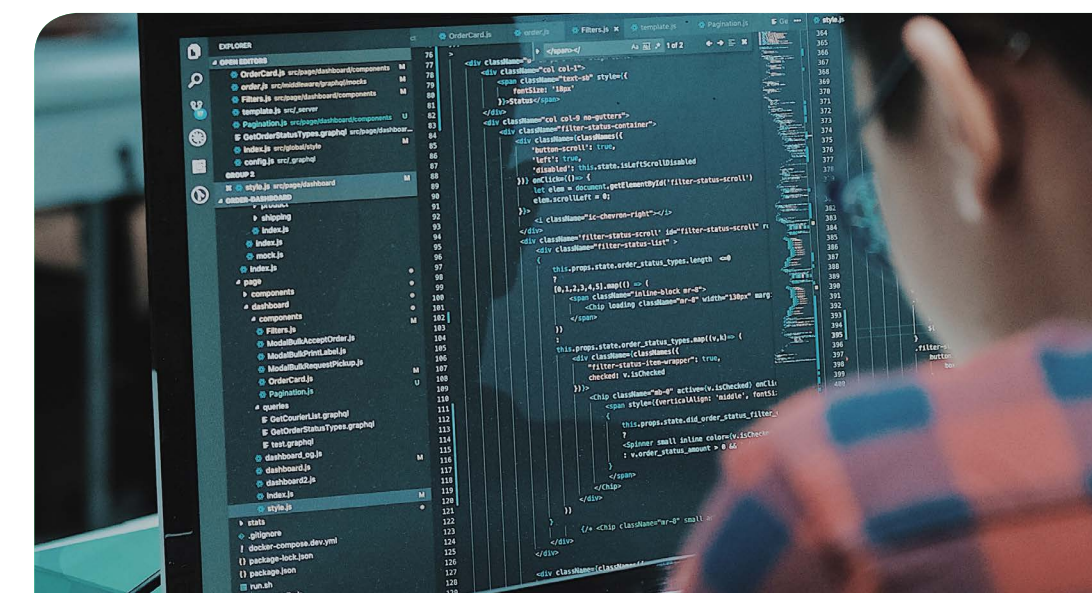
Example: Oncowatch – reform of the prostate cancer care pathway which could benefit 2 million EU patients in a single decade. Optimised treatment eliminates unnecessary medical interventions which will yield major health economic benefits.



### 2. HEALTHCARE TRANSFORMATION

We believe in revolutionising healthcare in Europe. We're uniquely placed to help healthcare systems evolve by using the power of our network to answer some of their biggest challenges and overcome fragmentation slowing down innovation.

Example: JIGSAW-E – new actors in osteoarthritis management (for therapeutic and education delivery), co-developed with patients and adapted to national diversity would benefit 40 million EU citizens. Elimination of inappropriate prescription and surgery will yield health economic benefits.



### 3. HARNESSING REAL WORLD DATA

We want to unlock healthcare data which could significantly improve the lives of patients and people in Europe. Due to fragmented and historical systems, healthcare data is largely untapped.

We're committed to enabling data access which will provide rich insight into diseases and could deliver prediction models for early diagnosis.

Example: JPAST – exploring the utility of combining patient reported data with serological data, to aid early prediction and the basis for personalised care for 4 million EU citizens. Health economic benefits include rationalised research costs and optimised treatment.



## OUR SIX FOCUS AREAS (CONT...)

In 2018, six Focus Areas were established as a framework for directing our funding decisions and securing long-term sustainability.



### 4. BRINGING CARE HOME

We are tackling the health challenges of an ageing population and multi-morbidity head-on by prioritising innovative solutions in chronic disease, which are improving health outcomes. A key part of this is to shift healthcare delivery away from the hospital to the home to release pressure on hospital services and providing the support to make this possible.

Example: Rehabilitation Gaming System (RGS), a hospital-proven neurorehabilitation technique in which post-stroke patients play virtual games to aid motor and cognitive recovery.



### 5. HEALTH IN THE WORKPLACE

In Europe, work-related stress affects one in four employees, leading to significant levels of sick leave. We want to improve health in the workplace at every level through better education, improved personal development and helping to make healthy choices the easy choice.

Example: WE@WORK – a novel approach to occupational health, combining wearable sensors, big data analytics and ergonomics to implement a solution that provides pervasive monitoring for early warnings, prompt detection of capacity loss, accurate risk assessments and self-management of healthy working life.



### 6. FOSTERING HEALTHIER LIVES

People and patients in Europe are at the centre of what we do. We want to change lifestyle behaviours by creating the tools and incentives for patients to enhance their health, preventing early ageing and warding off disease or disability.

Example: Vitality a service created through the integration of existing platforms and a health watch to assist patients at risk for diabetes in managing their own health. EU citizens. Health economic benefits include rationalised research costs and optimised treatment.



## EIT HEALTH'S VISION, CEO JAN-PHILIPP BECK

Our vision is that by 2022, improvements in the European healthcare systems will facilitate citizens' equal and fast access to high quality and affordable care across Europe, thus leading to improved health outcomes.

This will build on investments in prevention thanks to new payment models, leveraging new technologies and integrating digital health, sharing health data for the generation of new solutions, and empowering citizens thanks to education.

New healthcare provision models and best practices will be shared across Europe, reducing barriers to implementation and facilitating large-scale deployment of new solutions. EIT Health will be recognised as the leading European Health Innovation Network catalysing this development.

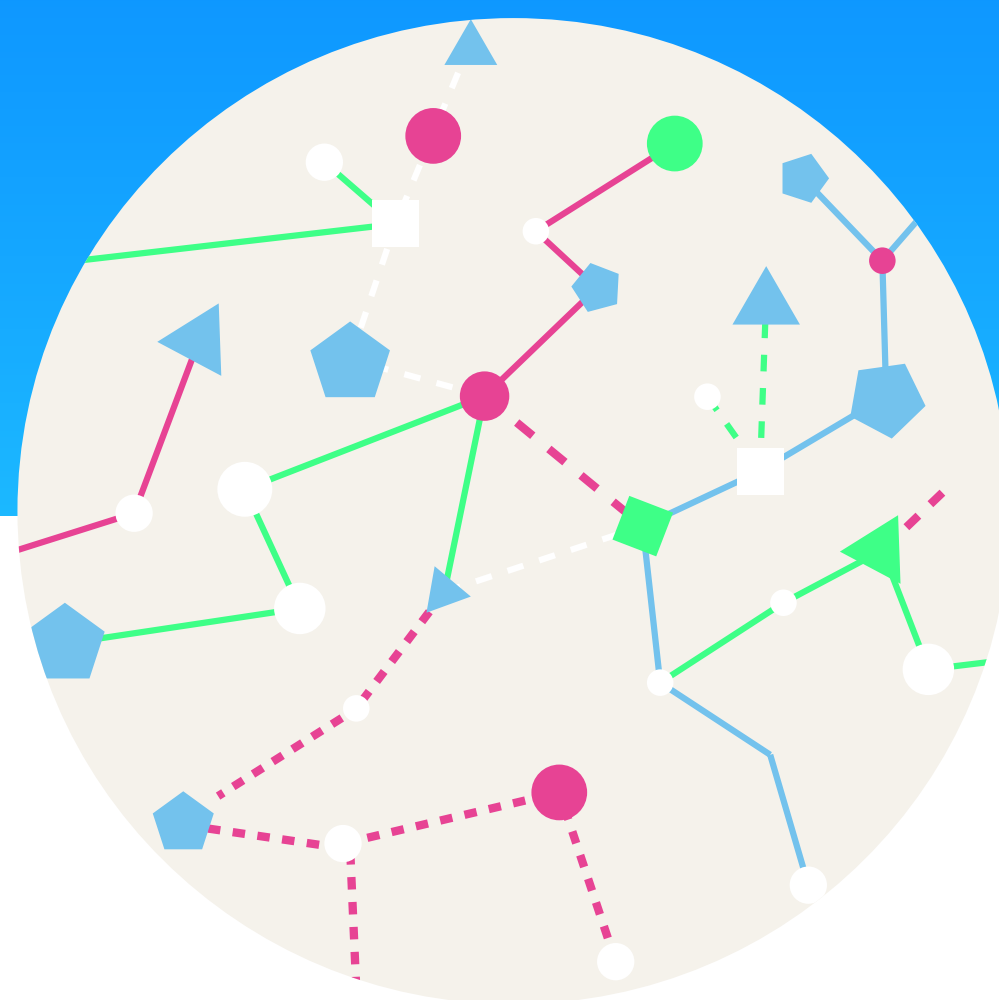
We will enter a growth phase, establishing the EIT Health on its path to creating impact: grow considerably and continue to create meaningful and sustained impact on the healthcare systems and citizens of Europe.



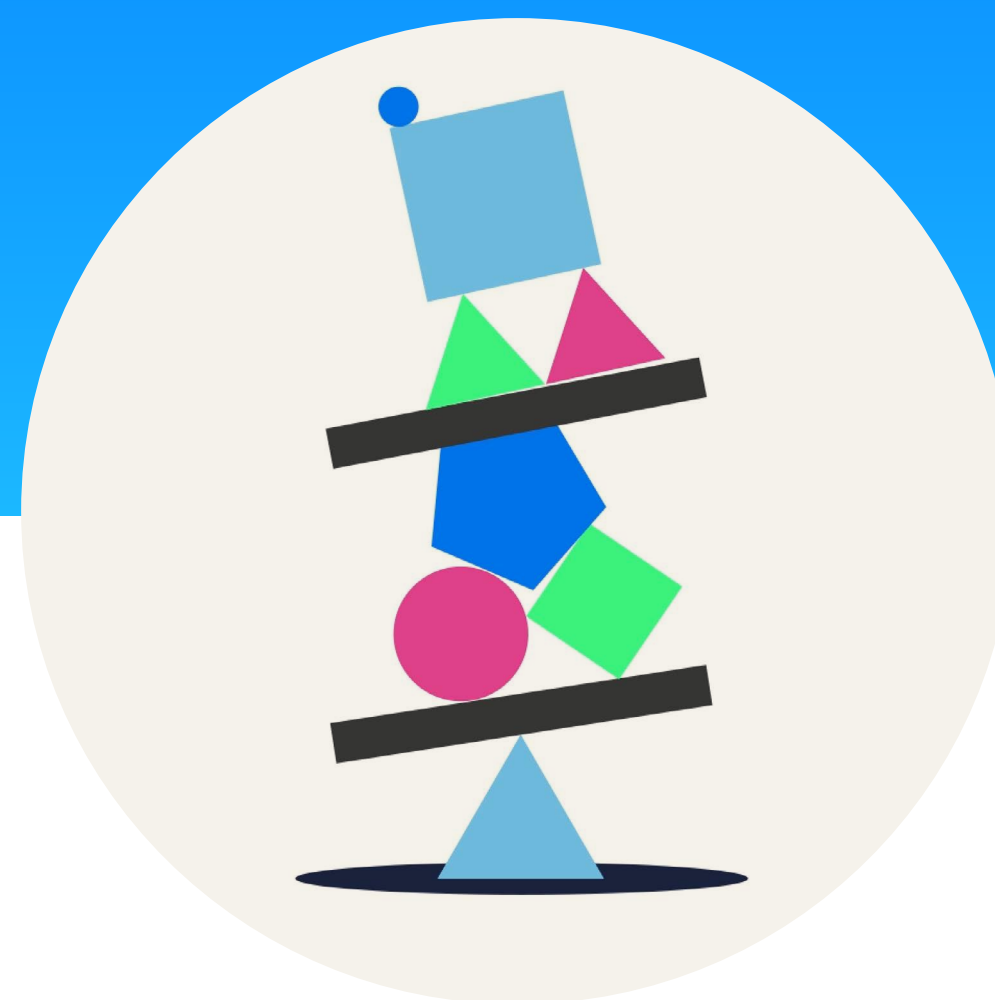
**...grow considerably and start impacting on the healthcare systems and citizens of Europe**



## OUR AIMS



1000+ products, services, new business models and processes facilitating longer and healthier lives and more sustainable health systems.



> €1bn investment for high impact start-ups and scale ups.



Globally recognised education programmes touching more than a million professionals and citizens each year.



## OUR ACHIEVEMENTS

**Find out what we've been  
working on over the last three years  
and how we measure success.**



## OUR HIGHLIGHTS

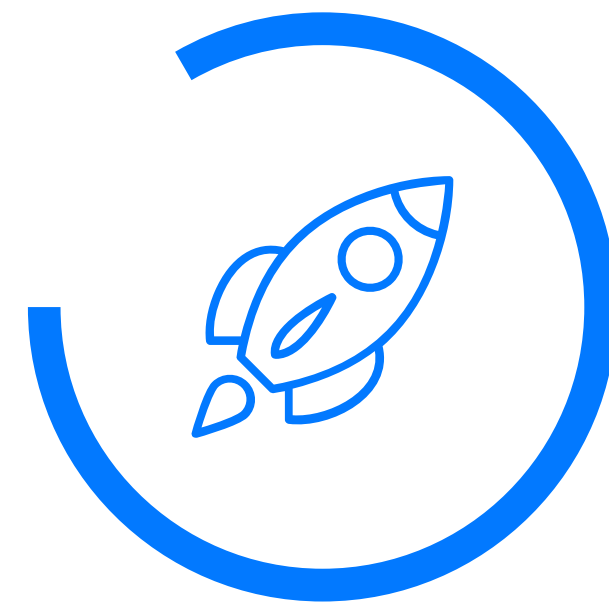


**Investment  
attracted by  
start-ups  
€90m+**

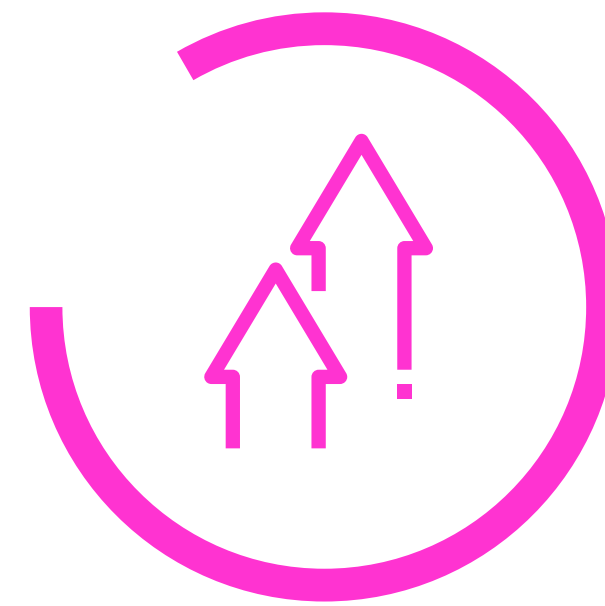
2016: €12.8m

2017: €28m

2018: €49.9m



**35+** products and  
services to market



**400+ start-ups  
supported**



**11,000+**  
professionals trained



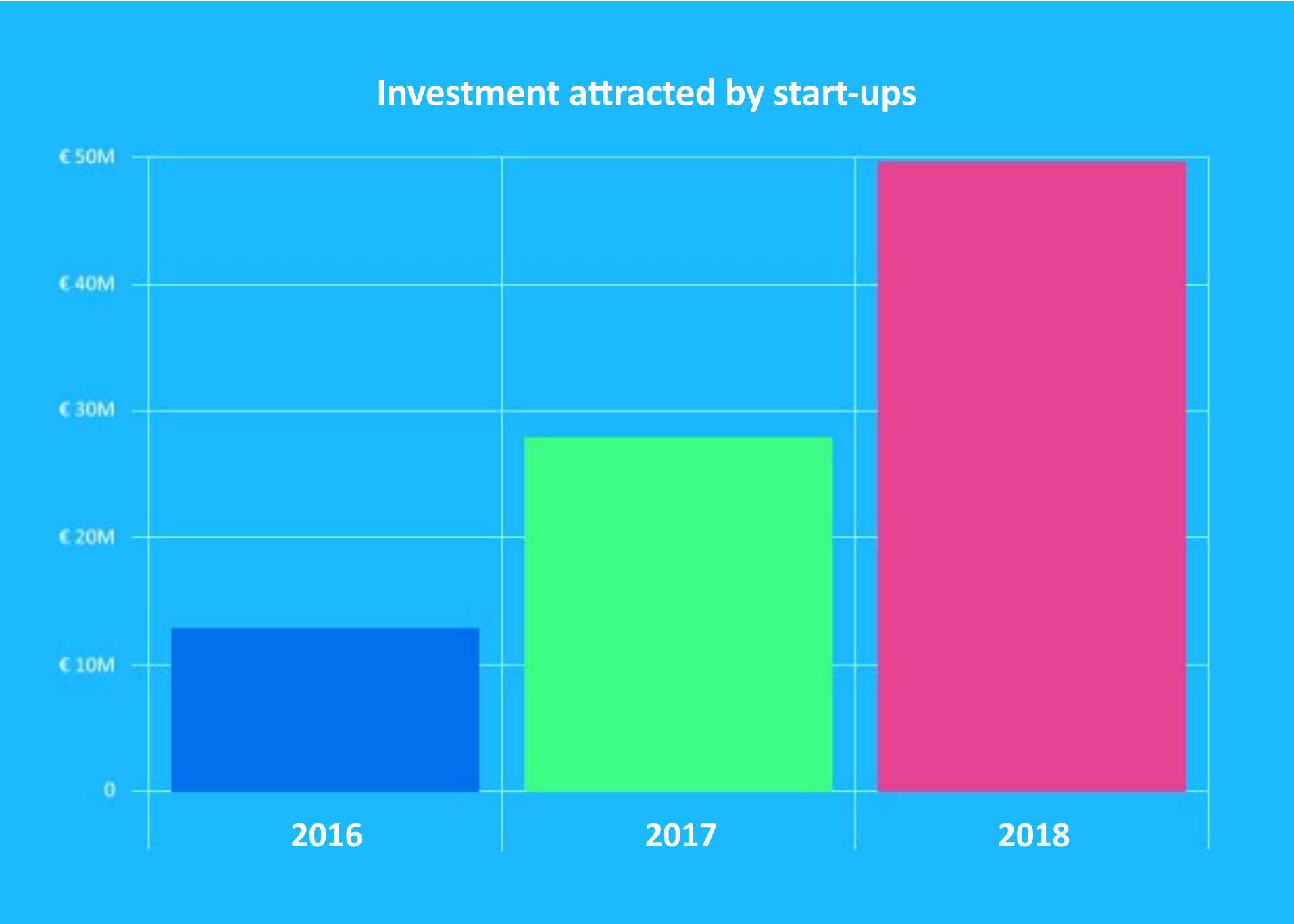
**10,000+**  
graduates trained

**Our story so far has been one of continuous growth. With each successive year we've invested in more people, more products and services and benefited more European citizens.**



INVESTMENT ATTRACTED BY START-UPS

Over the past three years, our starts-ups have attracted a total of more than €90M in investment.

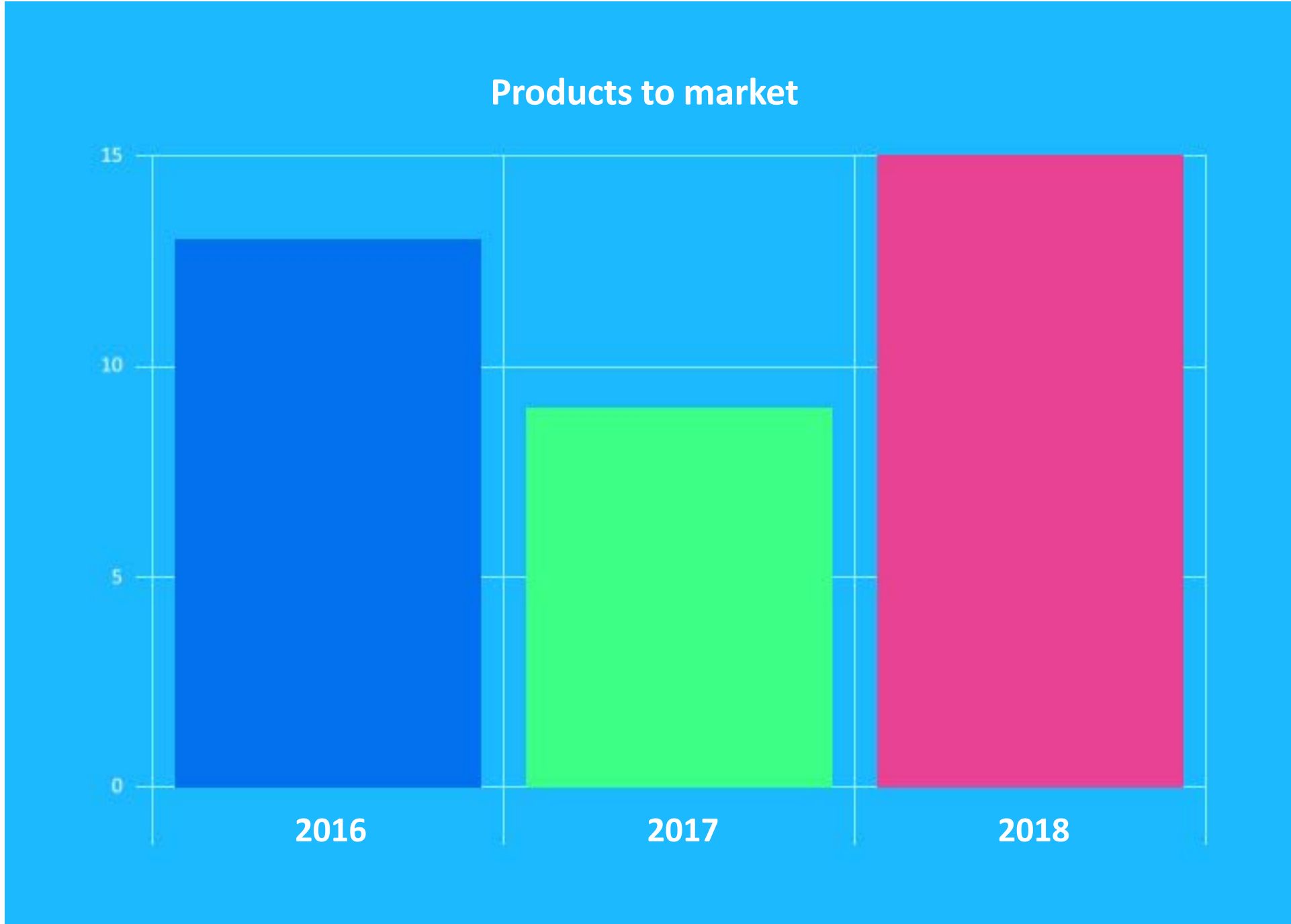




PRODUCTS AND SERVICES  
TO MARKET

We're proud to have brought dozens of ideas to life – transforming them from a flash of inspiration to real-world products and services.

Driven by collaboration, we put the most promising ideas together with the most promising people across our vast network to make them happen.

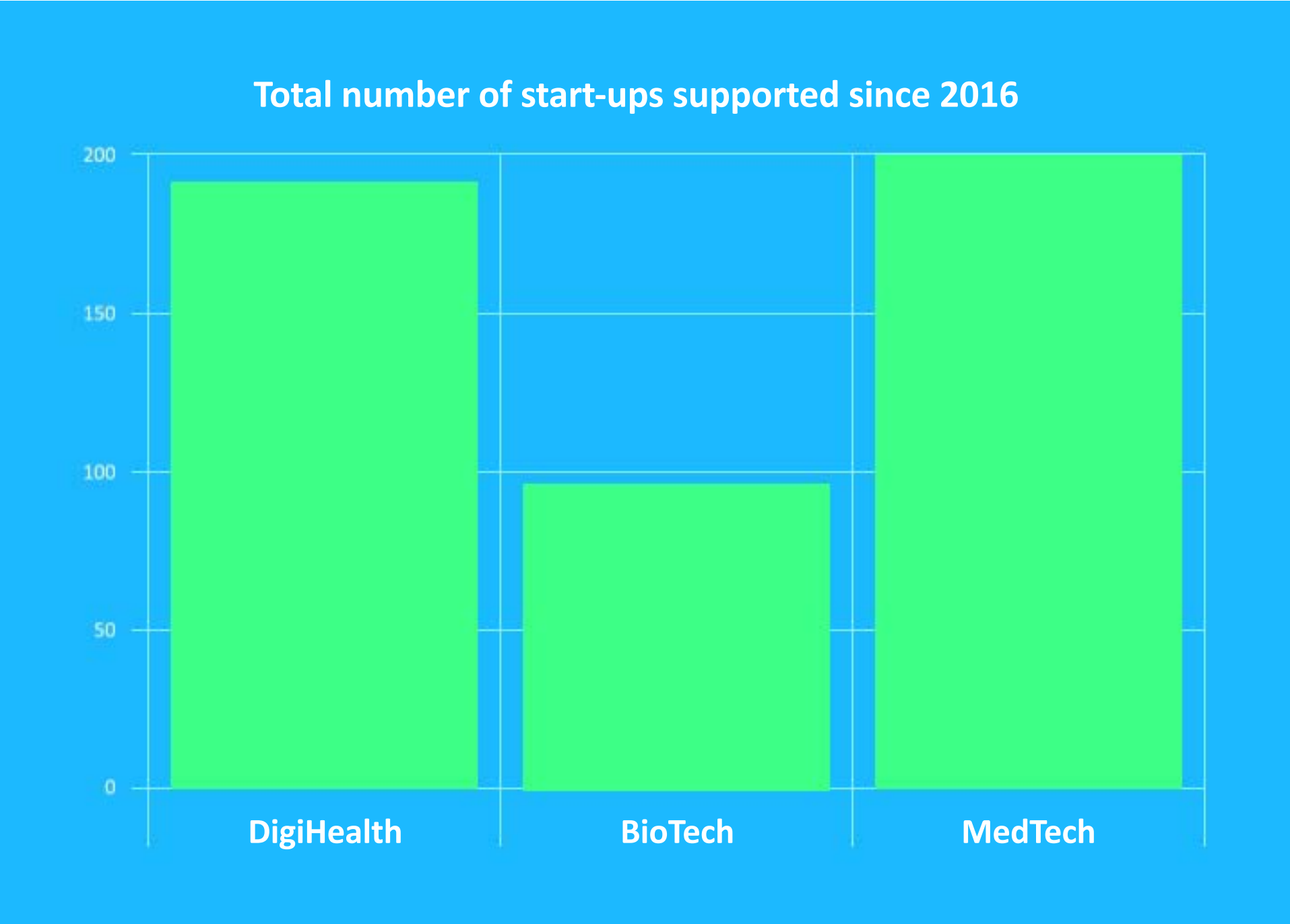




THE NEXT GENERATION OF START-UPS

Since our inception, we've continued to increase our investment in exciting new businesses across the continent.

We're now supporting more than three times the number of promising start-ups than in our first year. And this isn't just about financial support.



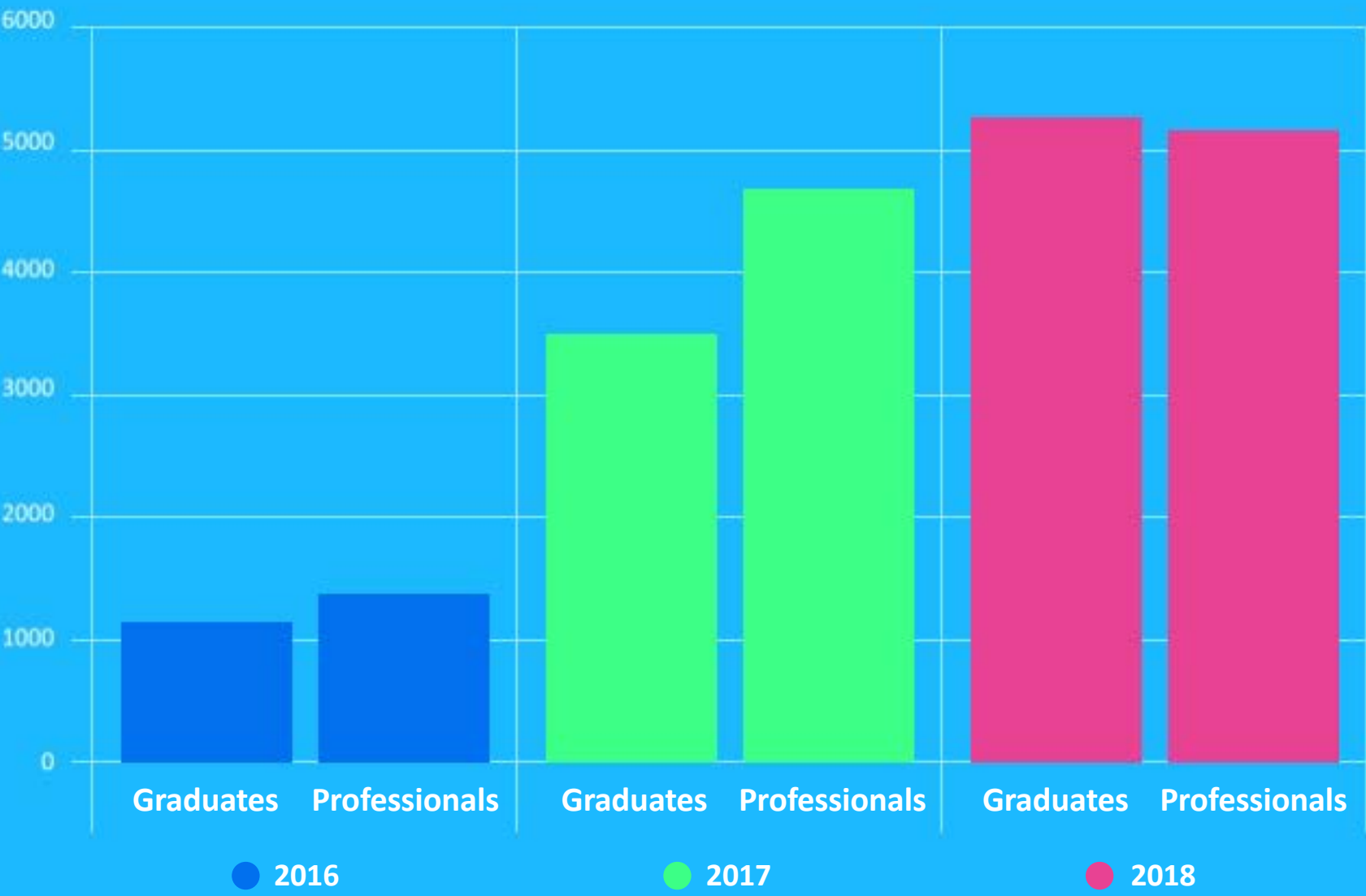


PROFESSIONAL, GRADUATE AND  
CITIZEN TRAINING

EIT Health is working harder than ever to develop the future leaders of healthcare.

Through access to forward-thinking research institutes, elite universities and healthcare providers, we're shaping health education across the EU.

Number of graduates and professionals trained





2016



## OUR PROGRAMMES:

### CAMPUS

- Five summer schools and two Master's programmes (International Masters in Innovative Medicine and Masters for Innovation in Healthcare) obtained EIT Labelling, a certificate of quality that is awarded only to excellent educational programmes.
- Professional and citizen training: The Advanced Management Programmes on Health Innovation – four leading business schools.
- CARE Campus – online training for carers.



## OUR PROGRAMMES:

2016

### ACCELERATOR



- Building on excellent infrastructure within the partnership and making them accessible to start-ups and spin-offs.
- More than 500 start-ups and teams of entrepreneurs enrolled for the various programmes.
- Mapping living labs and test beds in the community to enable real-life testing of prototypes on the end user and making them available to innovators, start-ups and SMEs across 45 institutions.
- Finance provided through the Investors' Network which engaged the investor community, attracted 102 participants and showcased 24 start-ups.
- 10 new companies created, 50+ entrepreneurs received Head Start and Proof of Concept support and 16 companies supported in increasing their global outreach.
- The GoGlobal programmes allowed 20 mature scale-up and SME teams to explore the opportunities to expand to new markets.

#### What is the Investors' Network?

*It connects largely local and regional circles of investors (including venture capitalists, Business Angels, corporate and public investors and international investors) across Europe with high potential start-ups.*



## OUR PROGRAMMES:

2016



## INNOVATION

- 23 innovation projects initiated in our inaugural year, across Europe and across therapy areas.
- Innovation projects are often multi-year projects and are 'needs driven', beginning from a recognised market need or societal problem and led exclusively by EIT Health's non-academic core partners, in order to ensure the strongest possible link to the market. An example is the P3-Stroke project which seeks to develop a novel hybrid imaging system, combining MRI (magnetic resonance imaging) and angiography. This technology will significantly reduce the time taken to diagnose suspected stroke patients in a critical care setting where time reduction is pivotal in improving patient outcomes.
- A key milestone achieved this year, was the performance of the first successful tests of modifying X-ray components to work in an MRI setting.
- Innovation also supported 'solutions driven' projects where a potential solution has been identified that capitalises on an opportunity or addresses a specific challenge faced within EIT Health's three societal challenges. The projects can be led by any of EIT Health's partners. For example, through the Patient Miner project, the first step was taken towards a clinically validated tool mapping pathways of disease progression in patients with multimorbid chronic diseases. The software will enable clinicians and patients to better understand their disease trajectories, and identify early intervention possibilities.



2017



## OUR PROGRAMMES:

### CAMPUS

- Two new Master's Programmes were developed. The training for executives and professionals forged new international collaborations with the Boston region in the US (GENiE group), grew a very visible network of female entrepreneurs (WE Health), launched CARE Weekly, an online academic journal assembling research for caregiving interventions, and brought together patients and healthcare professionals in the co-creation process (CCentre and CRISH).
- Innovation Days were delivered at nine universities in two Co-Location Centres and InnoStars.
- Seven summer schools and Short courses presented students with real-life challenges from industry partners.
- Challenge-based activities also widened their reach: the Entrepreneur labs (E-Labs) stimulated entrepreneurial thinking to 590 graduates in eight E-Lab hubs across Europe.
- 19 Massive Open Online Courses (MOOCs) to meet our direct outreach to European citizens and to empower them to manage their own health.



### OUR PROGRAMMES:

2017

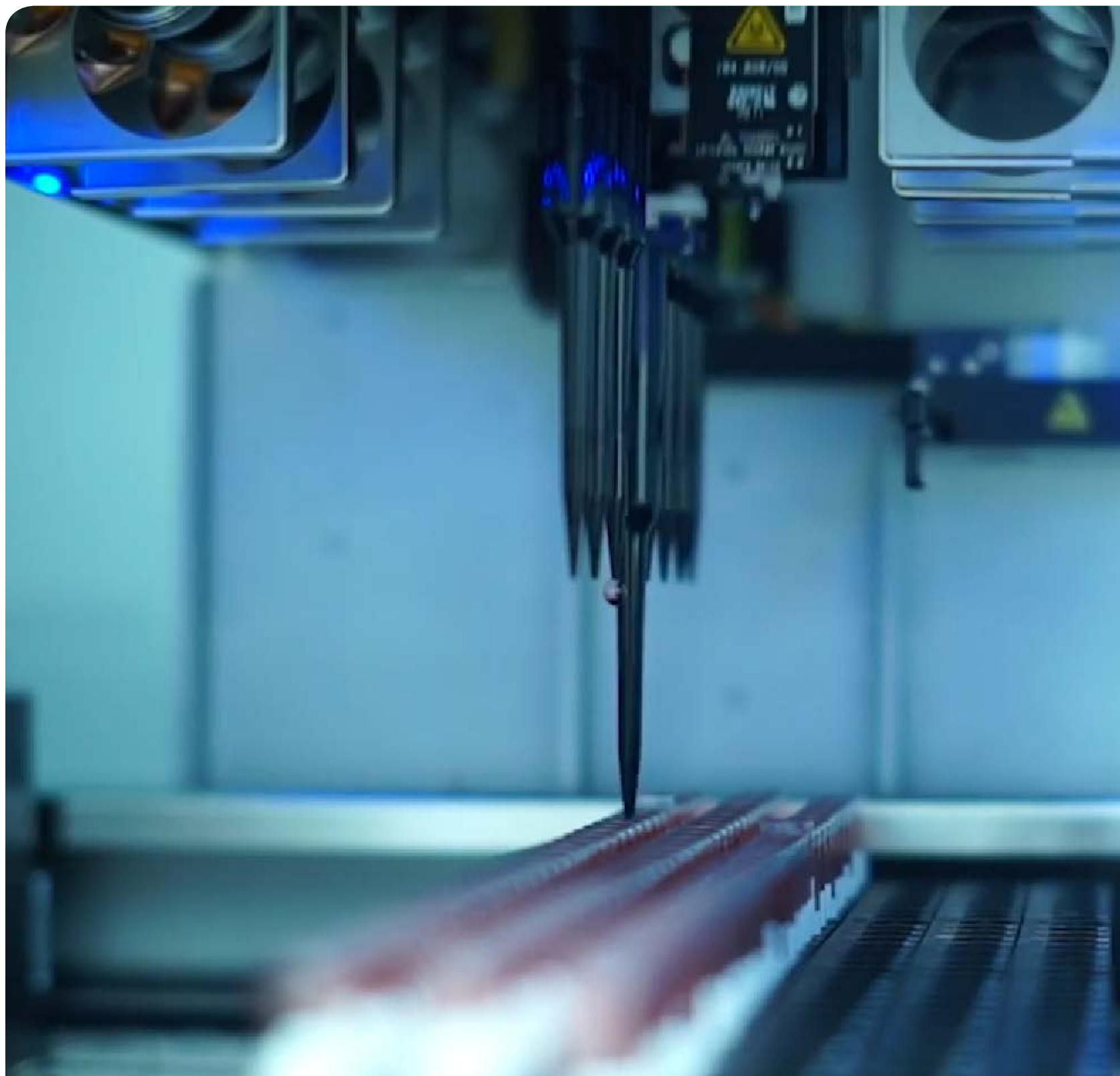


### ACCELERATOR

- 117 start-ups supported in Europe.
- Investment attracted for early stage companies growing beyond €13M this year.
- Market Coach Network tracked more than 50 mentoring interactions occurring as a result of the engagement of our regional offices and across our programmes.
- Fifty attendees participated at the POINT Lab workshop, enabling industry, start-ups and research institutions to access and utilise patient repositories to assess market needs more quickly.
- Network of Living Labs/Test Beds grown to almost 100, with portfolios of services determined in each. The most start-ups supported were in the HeadStart/Proof of Concept programme, with 35 start-ups receiving business creation support.



2017



### OUR PROGRAMMES:

#### INNOVATION

- 31 Innovation projects were implemented – both newly launched as well as continued from 2016.
- Projects include education elements (e.g. CLOSE), development of new business models (e.g. in The Health Movement) and the translation from “lab to market” as in Stockholm3.

#### **Launch of Wild Cards**

Through this unique programme, EIT Health offers world-class mentors and business coaches, supports and accelerates the formation of skilled and ambitious teams and funds them.



2018



## OUR PROGRAMMES:

### CAMPUS

- Two further Master Programmes (MTIH, CEMACUBE) and one PhD Programme (RECIPE) received the EIT quality label.
- Innovation Fellowships Programme immersed 248 graduates in clinical environments and developing entrepreneurial solutions. The combined commercial venture of innovation-designed solutions attracted more than €32,005,000. In addition, spin-out companies created 25 jobs in their business ventures.
- Innovation Days spread further across Europe to 18 locations, with 912 graduates trained in innovation and entrepreneurship and an additional 474 citizens participating in these events.
- Six summer schools trained 180 students with highly relevant topics at the intersection of medicine and technology, such as AI and gamification.
- Training for Executives & Professionals also achieved a high impact: EITHiEN brought together 119 health innovation educators at the third Genie Conference.
- CARE Campus, a unique online vocational training for formal and informal carers, already reached 3,576 citizens to improve care for carers and their families.



## OUR PROGRAMMES:

2018

ACCELERATOR



- The Bootcamp programme expanded to six Bootcamps, taking place all over Europe.
- The number of start-ups supported increased to 269.
- The Headstart programme increased its funding from approximately €2.6 million to €3.5 million in 2018. A total of more than €41.33 million in investments was raised by EIT Health, supported Headstart awardees since 2016.
- The European Health Catapult was listed among one of the top six European competitions in the Biotech domain.
- The Mentoring and Coaching Network was successfully reshaped with 127 new mentors and 131 additional mentees, leading to a total of 132 new mentoring connections.
- Launched first ever pan-European equity crowd-funding platform, aescuvest.eu, to foster and fund innovations from European start-ups and SMEs in an end-to-end digital process, and allow companies to promote campaigns and EU citizens to invest across borders.



## OUR PROGRAMMES:

2018



A cohort of 30 Innovation projects finished on December 2018, with Stockholm3, ADPS and CroíValve having the biggest impact so far.

Stockholm3 announced new government backing in two separate developments:

- It will become a standard part of care provided in Stockholm County.
- A €2.3 million grant to accelerate the roll-out of Stockholm3 in the Nordic countries.

A hugely successful pilot roll-out in the USA, Spain, Greece, Italy, Ireland and Switzerland for ADPS. CroíValve won the MedTech Innovator International pitch competition (April 2018).

## INNOVATION

The first edition of the Wild Card finished with the creation of two new ventures:

- s4dx, formerly DxLabtrack, aiming to close the data gap between blood collection and lab analysis enabling a new quality standard for diagnostic decision making.
- AbTrace, tackling antimicrobial resistance using Artificial Intelligence and Big Data to transform Antibiotic Prescription.

With 15 products and services launched to the market, Innovation projects also engage citizens, with 29,758 citizens using our services.



## IMPACT AND RESULTS SUMMARY

We have already delivered impact in our first three years of operation, including start-up creation and the launch of new products and solutions. We are utilising ever more stringent tools for measuring performance, outcome and impact across the measures that matter most.

The overall long-term impact should be seen in qualitative terms as increased access to improved high quality care at an affordable cost, either due to new technologies and solutions (i.e more patients treated per given cost), reducing cost or a

shift in focus to prevention – thus reducing disease burden.

Activities are expected to have a significant medium and long-term pan-European impact on economic growth, the development of human capital, the creation of high quality jobs and the sustainability of healthcare systems in Europe. Therefore, our impact and outcomes are rooted in the ‘triple win’ concept established by the European Commission.

**Our impact and outcomes are rooted in the  
‘triple win’ concept established by the  
European Commission**



REAL STORIES

**Read real stories of the start-ups,  
programmes and initiatives  
we've made happen.**



2016

CAMPUS



*DEFINING AN UNMET  
NEED AT THE EARLIEST  
TIMEPOINT LEADS TO  
A VIABLE BUSINESS  
AND SUBSEQUENT  
INVESTMENT*

## PROVERUM MEDICAL

### **Offering an alternative to surgery for a common prostate problem**

Dr. Conor Harkin participated in an Innovation Fellowship (IF) and directly entered the Accelerator to get full support in business creation.

At the close of the Fellowship, he secured approximately €500,000 in grant aid from Enterprise Ireland to develop the project

and optimise a solution to the problem. At the concluding stages of the grant, while fundraising private seed investment money, he applied and was accepted into the EIT Health LaunchLab program, which was used to hone his business model and pitch.

He also applied to the Headstart Proof of Concept Fund in the UK Co-Location Centre, where he secured a €50K award that was used to support his team of two

engineers and bring the product closer to market.

At this stage, the fellowship has secured several million in SEED funding to take the technology through the regulatory process and to market.



2016

ACCELERATOR



*SUPPORTING  
ENTREPRENEURS TO  
TURN GREAT SCIENCE  
INTO A BUSINESS  
PROPOSITION THAT  
CAN EVENTUALLY  
HELP PATIENTS*

## TUBULIS®

### **Removing bottlenecks that prevent use of Antibody Drug Conjugates (ADCs)**

ADCs deliver chemotherapeutic drugs specifically to the site of a disease, preventing side-effects in healthy tissues and cells. Yet over 30% of new ADC molecules are stopped in early development, due to safety concerns.

Tubulis generates uniquely matched protein-drug conjugates by combining proprietary novel technologies with disease-specific biology and aims to expand the therapeutic potential of antibody drug conjugates (ADCs) ushering in a new era and delivering better outcomes for patients.

Created by two PhD students who started with an IP, Tubulis® developed their business plan through an EIT Health

Bootcamp, went on a roadshow through the partnership and ended up with a number of collaborations, and a grant from the German government of €1.3M. They have won numerous accolades across the globe.



2016

## INNOVATION



***OUTCOME-ORIENTED  
SUPPORT IN DATA ACCESS,  
REGULATORY AFFAIRS  
AND STAKEHOLDER  
INVOLVEMENT LEADING  
TO AN EDUCATIONAL  
PROGRAMME***

## CLOSE

**Automated glucose control at home for people with chronic disease**

CLOSE aims to innovate homecare for severely ill, insulin treated patients with type 2 diabetes mellitus by offering an integrated product and service package. Blood glucose levels are controlled by an artificial pancreas that is installed at the patients' home and operated

through trained caregivers using a remote control. CLOSE paves the way between prescribers, patients and payers and demonstrates an effective, safe and cost-efficient way of managing type 2 diabetes. The solution employs decades of expertise in global diabetes markets and closed-loop technology, combined with a patient-centered attitude, to inform the process.

**The project has helped:**

1. Improve homecare for patients
2. Alleviate strain on supporting relatives
3. Prevent further health complications
4. Reduce health care costs

Moreover its success has led to a consortium of active partners, a two-part Campus Summer School, a seven-week trend seminar by Campus students and a design-thinking workshop.



2017

CAMPUS



**RECOGNISING THE  
INCREASINGLY  
SIGNIFICANT ROLE OF  
WOMEN IN HEALTH  
INNOVATION BY  
DESIGNING BESPOKE  
TOOLS AND RESOURCES**

## WE HEALTH

### Prioritising women in health innovation

Women play a key role in healthcare, and comprise approximately 70% of the medical and health services workforce, but only 4% of healthcare companies have women CEOs. As women are 50% of end users of life science products, it is of democratic significance to increase their participation in solving healthcare problems.

Empowering Women Entrepreneurship in Health Innovation (WE Health) initiated by the EIT Health CAMPUS programme, aims to enhance the participation of women in health innovation and entrepreneurship activities. EIT Health brought six academic partner institutions together to produce a number of modules specifically created to inspire and support women to advance in their professional careers.

*“The way you put together the first module, the iteration process... people in science don’t teach in that way. I have committed to forging my own path, by starting a business. In fact, I already have a partner, and have found funding sources, so hopefully it will be launched within the next 12 months.”*

**Erin Fears, MBE student at  
Karolinska Institute**



2017

ACCELERATOR



*PROVIDING ACCESS TO  
A NETWORK OF KEY  
PARTNERS TO ACCESS  
KNOWLEDGE, TALENTS,  
PATIENTS AND  
MARKET INSIGHTS*

## DIABELOOP

### **Tackling diabetes – using telemedicine to connect the people who matter**

An artificial pancreas solution designed to drastically improve the management of Type 1 diabetes. Diabeloop can transmit to a telemedicine service, helping patients improve the monitoring of their health and allowing medical professionals to optimise their treatment.

Support from EIT Health enabled Diabeloop to quickly recruit additional engineers to help secure a clinical trial. We also helped Diabeloop establish relationships with new European partners and accelerate the development of a solution for children in Europe.



2017

INNOVATION



*ACCELERATING  
PROGRESS IN TESTING,  
VALIDATION AND  
MARKET ACCESS  
PHASES*

## STOCKHOLM3

### **A new clinical gold standard for prostate cancer diagnosis**

Originating from a two-year project, Stockholm3 is a blood-based test that predicts the risk of aggressive prostate cancer. Providing four significant advantages over current clinical practice, Stockholm3 can:

- Increase prostate cancer survival by detecting 20% more men with aggressive prostate cancer
- Identify men with increased genetic risk of developing prostate cancer
- Reduce unnecessary treatments by 50% saving men from severe side effects such as impotence, incontinence and sepsis

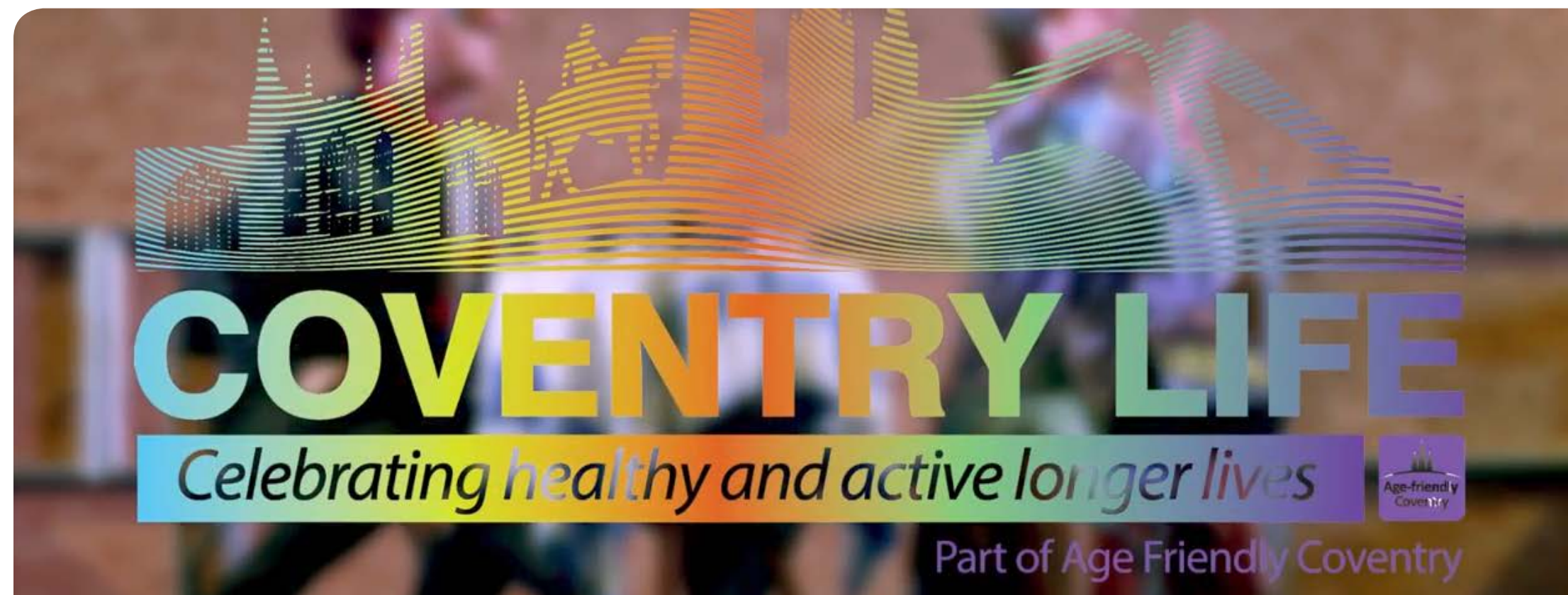
- Help doctors to reduce waiting times between initial suspicions and first treatment

EIT Health was a catalyst for the project, allowing the close collaboration between industry, healthcare and academic networks needed to testing, validation and market access. Stockholm3 is now in use in Sweden, Norway and Finland with other EU countries currently evaluating it.



2018

CAMPUS



*EMPOWERING CITIZENS  
TO TAKE CHARGE OF  
THEIR OWN HEALTH*

## COVENTRY LIFE FESTIVAL

### **Making good health more accessible to the ageing population**

Coventry Life Festival was a free public event held on International Older Persons Day with the aim of inspiring participants to be active, eat healthily and, most of all, connect.

The festival was part of the EIT Health Campus project CityNet, a network

of cities organising activities to engage, inform and connect citizens, municipalities, NGOs and entrepreneurs to support active ageing.

Beyond partly funding the festival, EIT Health gave invaluable support by providing access to its unique network of partners to present, run workshops and conduct health checks.

The festival was extremely effective, with more than 300 health checks provided

to festival attendees, as well as 200 massages from physiotherapy students.

Additionally, more than 50 referrals to GP practices were made from target groups who typically do not access healthcare services.



2018

ACCELERATOR



*HELPING COMPANIES  
NAVIGATE THE COMPLEX  
REGULATORY PATHWAYS  
TO MARKET*

## FIBRICHECK

**The world's first medically-certified mobile app designed to prevent strokes**

FibriCheck, is the world's only medically-certified app that can help prevent strokes by detecting atrial fibrillation and other heart rhythm disorders using only a smartphone or smartwatch. EIT Health is committed to helping both new and existing companies, commercially available

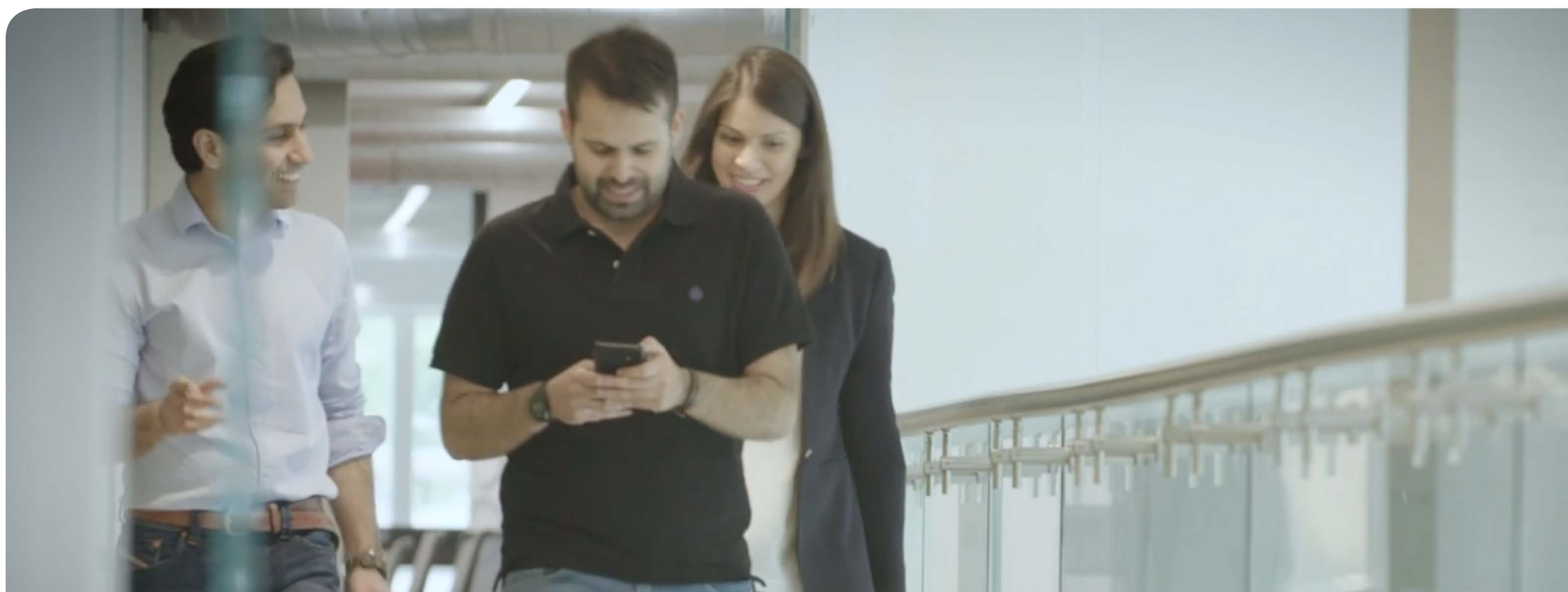
in Europe since 2017, FibriCheck is supported by the medical community and used by more than 30,000 citizens. An EIT Health Head Start Grant for €50,000 prepared FibriCheck for market entry, while support in the EIT Health Product/Market Fit programme (worth €25,000) allowed it to exploit international markets. In October, the FDA approved FibriCheck as a medical smartphone application, opening the way to the US market.

Furthermore, the app was the Winner of the Digital Health category of the EIT Health European Health Catapult contest.



2018

INNOVATION



***SUPPORTING GREAT  
TEAMS WITH THE  
LAUNCH OF THEIR  
BUSINESS TO ADDRESS  
A GLOBAL HEALTH  
CHALLENGE***

## ABTRACE

### **Fighting the growing threat of AMR through Artificial Intelligence (AI)**

Winners of the 2018 EIT Health Wild Card challenge, of “Fight Back”, (which sought projects that aim to address antimicrobial resistance), Abtrace is using AI and big data to transform antibiotic prescription.

Abtrace processes healthcare data through an augmented decision-making tool, comparing it to billions of data points and presenting a recommendation for which, if any, antibiotic should be prescribed. The solution enables clinicians to make better informed decisions when prescribing antibiotics, helping to reduce overuse and misuse, which ultimately contributes to the fight against AMR.

The team was tasked with establishing a start-up and receives mentoring and financial support of up to €2 million to help commercialise their innovation.



