

# *RIS Innovation Call 2020*

Budapest, 21 January 2020

Judit Jobbágy  
Judit Fejes  
Monika Tóth



# European Institute of Innovation & Technology

The vision is to become the leading European initiative that empowers innovators and entrepreneurs to develop world-class solutions to societal challenges and creates growth and skilled jobs. The over € 2 billion funding is part of the Horizon 2020 program.

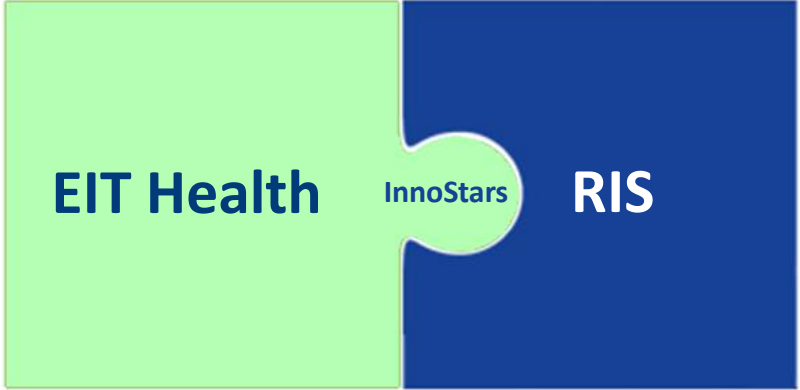
Currently eight themes:

- Climate-KIC
- EIT Digital
- KIC InnoEnergy
- EIT Health
- EIT Raw Materials
- EIT Food
- EIT Manufacturing
- EIT Urban Mobility

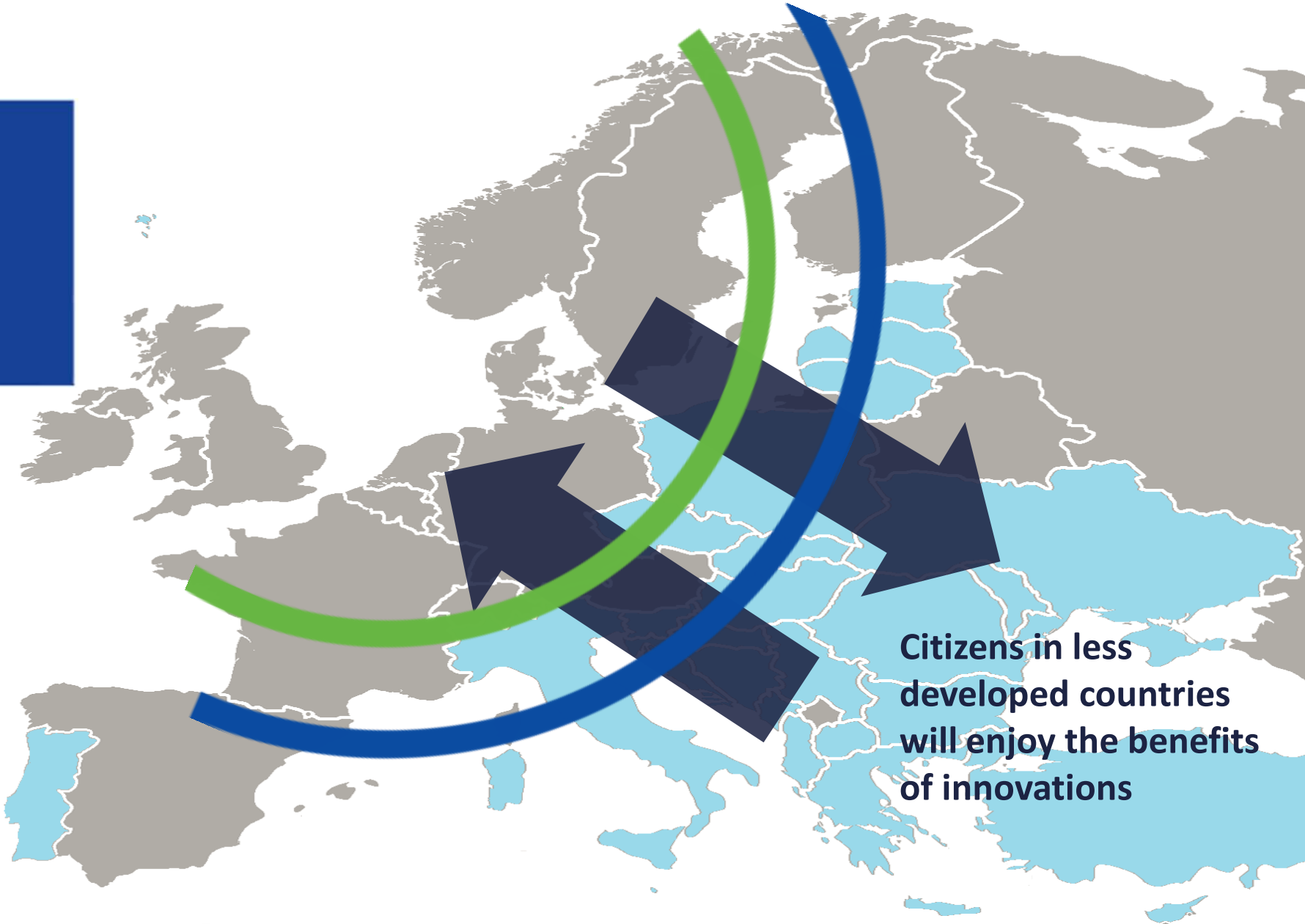


# RIS Programme 2020

# Goal of the Regional Innovation Scheme (RIS): We close the gap



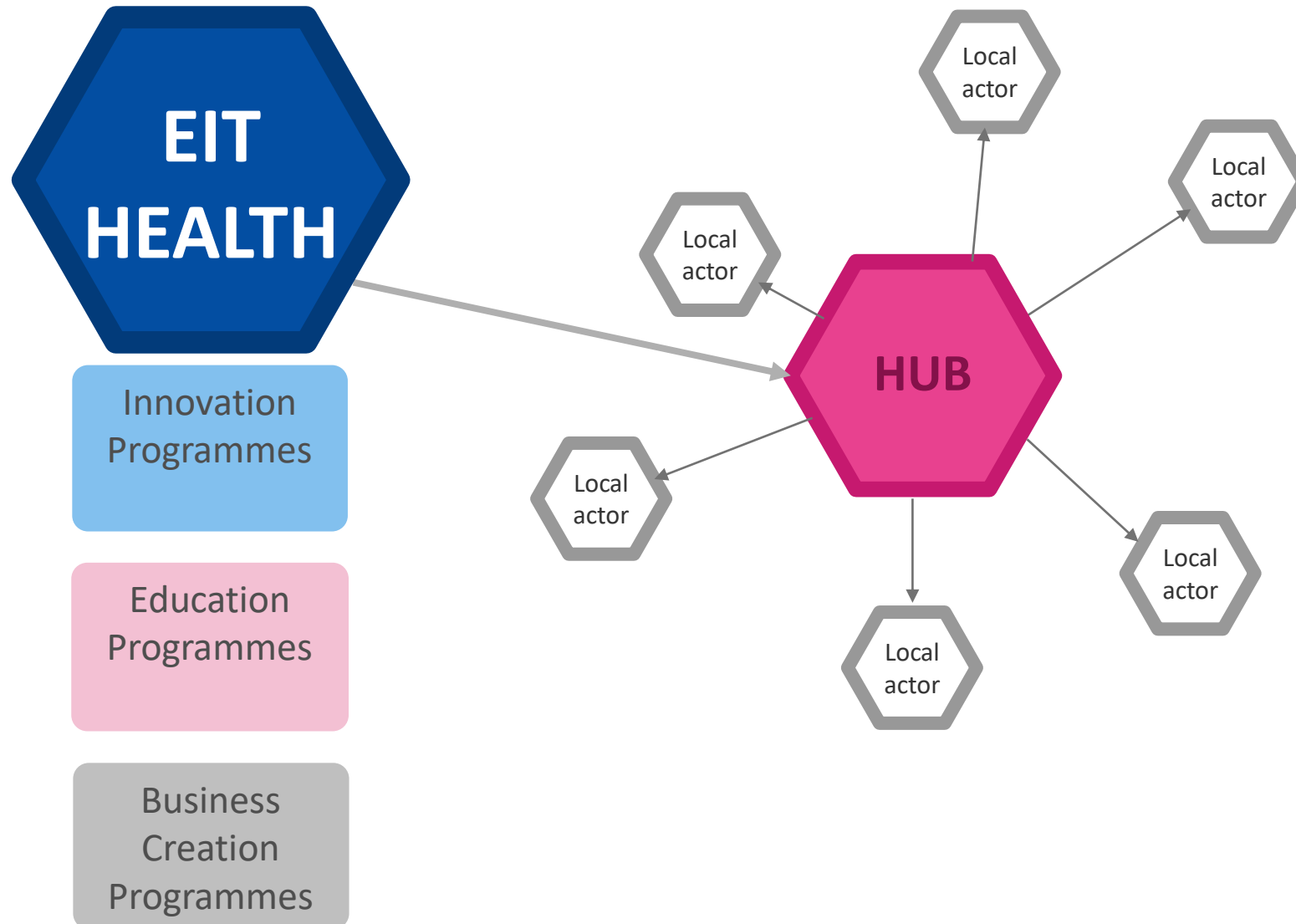
“New ideas, new talents come from the (periphery)”  
(EIT GB 2014 Info Day)



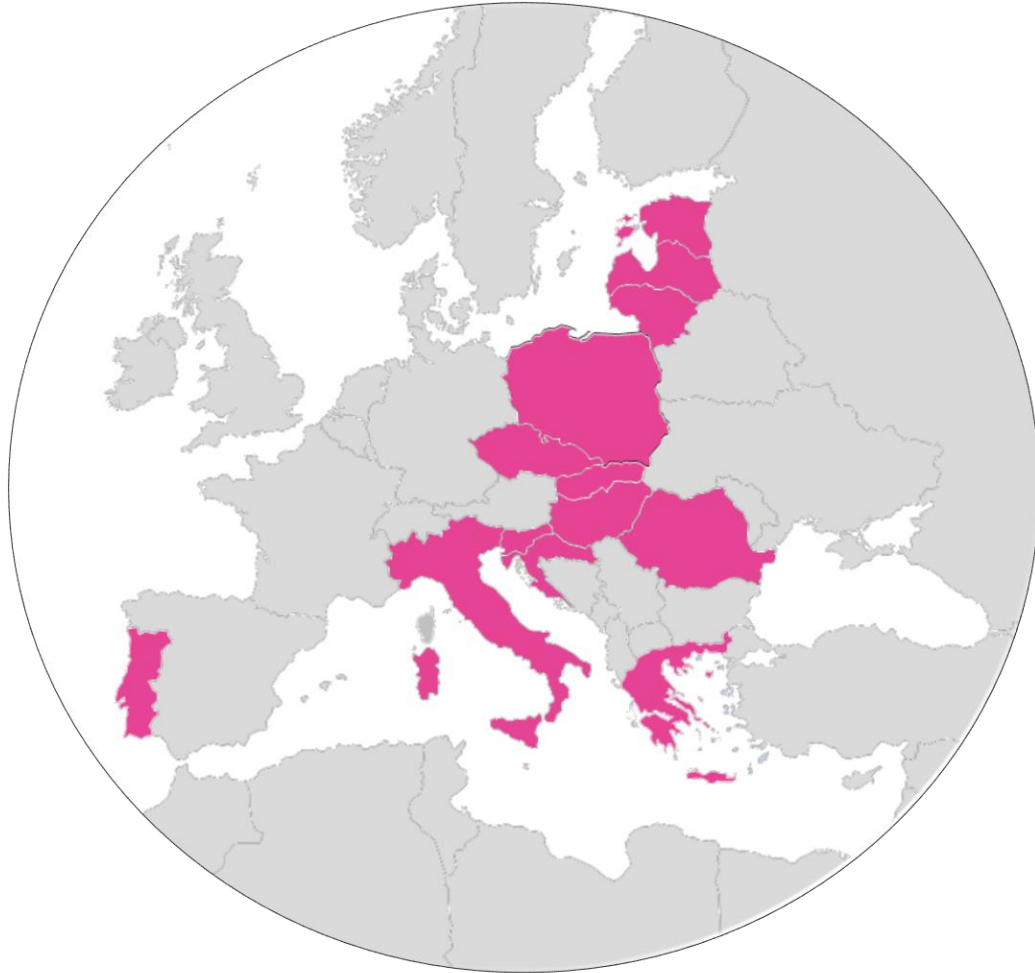
Citizens in less developed countries will enjoy the benefits of innovations

# Areas of action

# 1. Engage local players in EIT Health activities



# EIT Health RIS program is covering almost half of Europe



Our RIS partners and talents face **difficulty to reach stakeholders** in the better developed regions.

Our Core Partners and branch offices in Western Europe are **interested** in the potential **but cannot cover** these regions on their own.

Thus **strong need for the bridge function** of the RIS program. **Closing the gap in skills is a prerequisite.**

# How do we support engagement of organisations and individuals from countries with 'moderate' or 'modest' innovation capacity?

## Gateway to untapped potential

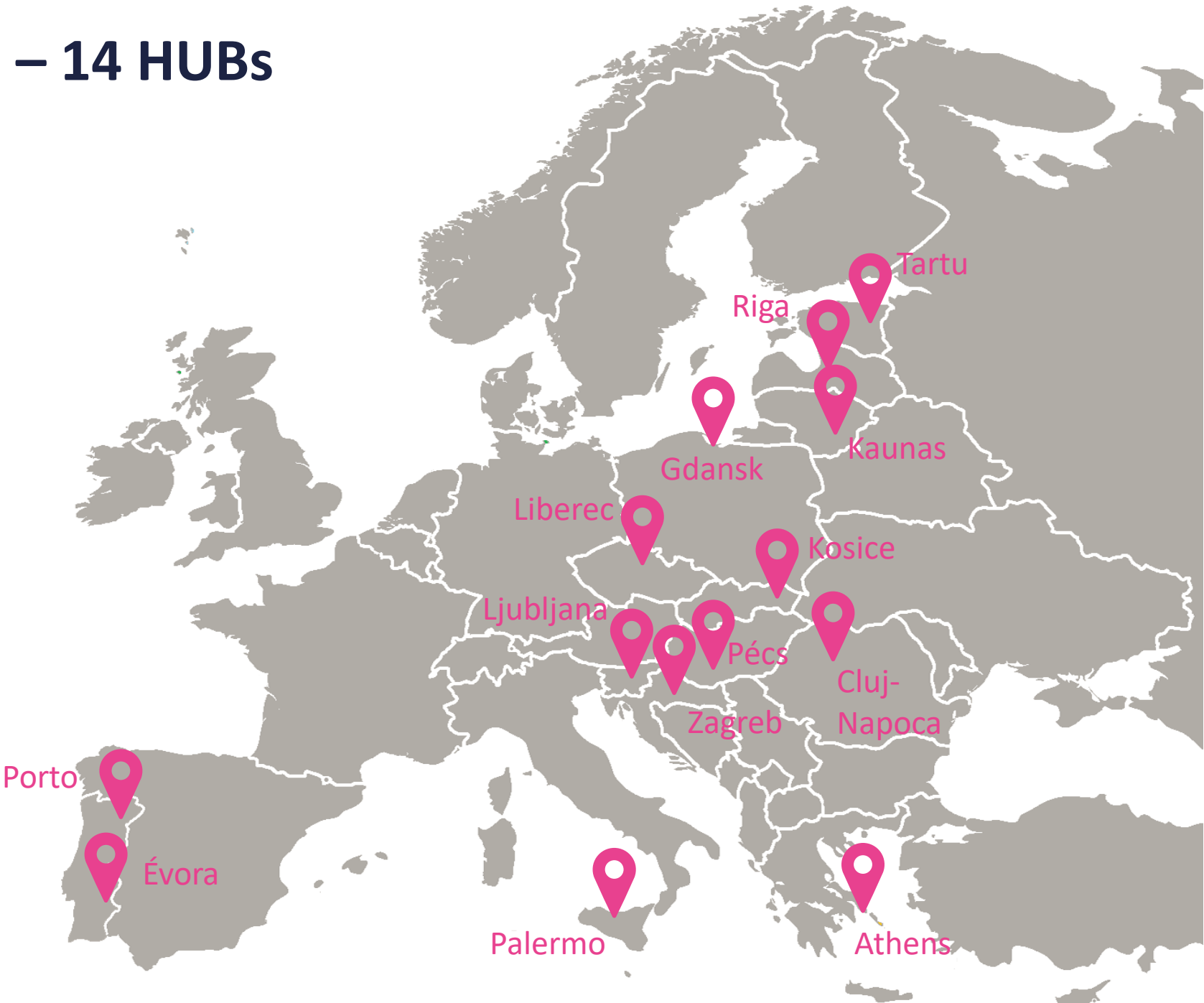


**FACILITATE  
COOPERATION**





# Geographical coverage – 14 HUBs



# RIS Innovation Call 2020

# Aims of the RIS Innovation Call 2020

- **Development of the local innovation ecosystem in RIS regions**
- **Facilitate and foster cooperation among local KTI actors**
- **Provide EIT RIS regions with appropriate tools/technics/skills to participate in EIT Health Business Plan 2022 in consortium with EIT Health partners**
- **Provide EIT Health RIS regions with internationalization tools**

## Eligibility criteria #1

**The proposal's content corresponds, wholly or in part, to one of the six EIT Health Focus areas**

- 1. BRINGING CARE HOME**
- 2. HARNESSING THE POWER OF REAL-WORLD DATA (RWD)**
- 3. CREATING THE ENABLING ENVIRONMENT FOR HEALTHCARE TRANSFORMATION**
- 4. TOWARDS HEALTH CONTINUUM CARE PATHWAYS**
- 5. EMPLOYER LEADERSHIP IN IMPROVING HEALTH OUTCOMES IN THE WORKPLACE**
- 6. FOSTERING HEALTHY LIVES BY INTRODUCING BEHAVIOURAL CHANGE**

## Eligibility criteria #2

**At least two legal entities' collaboration is expected, where both academic and non-academic partners are represented.**

**Academic institution: educational institution dedicated to education and research, which grants academic degrees.**

**Non-academic institutions: local hospitals, SMEs, healthcare industry, start-ups, research institutes, local/regional government and other NGOs.**

**FAQ#1:** *If an educational institution do not grant academic degrees, they are not eligible, right?*  
They are eligible, however, to consider an institution **as Academic Institution**, it must grant academic degrees.

**FAQ#2:** *Is it possible to have two or more non-academic partners in the same consortium?*  
**YES**, there is no limitation in the number of partners, as long as there is **at least one academic and one non-academic partners.**

## Eligibility criteria #3

**Each partner must be established in the same RIS country.**

**Eligible RIS countries: Croatia, Czech Republic, Estonia, Greece, Hungary, Italy, Latvia, Lithuania, Poland, Portugal, Romania, Slovakia, Slovenia.**

**FAQ#1:** *Is it possible to have at least one partner from another region than the one where the Hub is located?*

YES, **Non-leading partners** can be from anywhere in the RIS country of the NUT2 region.

**FAQ#2:** *We have partners in other RIS countries. Can we include them in the proposal?*

NO, all partners must be established in the **same RIS country**.

## Eligibility criteria #4

The leader legal entity of the partnership must have an established and registered representation/branch in the NUT2 region where one of EIT Health Hubs is located in the corresponding RIS country.

Eligible NUT2 regions and Hubs are listed in the Call document page 7.

**FAQ#1:** *What are the conditions/form on how the established and registered representation / branch should be proved?*

The existence and the location of an established and registered representation/branch should be based on **self-declaration** at application phase, however selected projects will have to provide company's registration document before signing the sub-granting agreement.

## Eligibility criteria #5

**The local EIT Health RIS Hub has to be a partner in the partnership besides at least one academic and one non-academic partners.**

Eligible Hubs are listed in the Call document page 7.

**FAQ#1:** *Can the RIS hub act as the academic partner of the consortia?*

NO, at least at least two legal entities' collaboration is expected, besides the local RIS Hub in the project partnership.

**FAQ#2:** *Can a company participate in the Call, if it was subcontracted by the HUB to extend their Hub activities?*

If the subcontractor is contracted for certain elements of the Hub's activities, they will be considered as Hubs and they can apply without funding only.



# The local EIT Health RIS Hub

Eligible Hubs are listed in the Call document page 7.

- Each EIT Health RIS Hub can participate with any number of innovation proposals.
- Although the local EIT Health RIS Hub has to be an integral part of the partnership alongside the local KTI actors, they cannot benefit from the project budget due to budget restraints imposed by their contract with EIT Health.

**FAQ#1:** *Can a RIS hub's affiliate participate in the RIS innovation project calls?*

If a project partner is affiliated to the RIS hub (e.g two units of the same university), it can participate in the project **only as project supporter** without receiving fund from the project.

## Affiliated entities

- A legal entity that is directly or indirectly controlled by, or under common control with or controlling a party.
- Control means:
  - Ownership > 50%
  - Right to elect or appoint managing board members, directors
- Affiliated entities can be part of the consortium, but the sum of all grants received by affiliated entities max EUR 50,000.

## Maturity level expectations

**Projects selected will have completed IML 2 (Idea) AND has started IML 3 (Proof of Concept) at least in 2 of the 4 domains.**

**FAQ#1:** *Do the project has to start on the end of phase 2 of Cimit IML or it can start later in the process?*

The above maturity level expectations are minimum requirements. The project can be more advanced, however based on research, the RIS region lacks funding for completing 'Proof of concept'. It will be the responsibilities of the evaluators to evaluate the necessity of the funding for the project.

**FAQ#2:** *How does one determine his finish point? Which phase in Cimit IML should be applied on the end of the year?*

Funded projects' finish point will depend on the sector (BioTech, MedTech, Digital Health), and complexity of the project.

## Project funding

Legal entity category	Staff headcount	Turnover	or	Balance sheet total	Max Funding €
Large enterprise	> 250	> € 50 m		> € 43 m	0
Medium-sized enterprise	< 250	≤ € 50 m		≤ € 43 m	35.000
Small enterprise	< 50	≤ € 10 m		≤ € 10 m	50.000
Micro enterprise	< 10	≤ € 2 m		≤ € 2 m	50.000
Non-profit organizations	N/A	N/A		N/A	50.000
Academic Institution	N/A	N/A		N/A	50.000

## Project funding

- **Funding per project partnership max. EUR 75.000.**
- **Funding per partner max EUR 50.000.**
- **Large enterprises cannot receive funding but can be part of a partnership applying for funding and they can benefit from the networking opportunities.**
- **Medium enterprises will only be funded up to 70%.**
- **If the same beneficiary (including its affiliated entities) is included in more than one winning project's partnerships, the sum of all grants received by the beneficiary and its affiliates cannot exceed EUR 50,000.**

## Eligible activities

### Compulsory activities

- Min. 9 hours of mentoring to support the implementation of the project throughout the project lifecycle.
- Project development plan (summarizing the actions necessary for the innovative solution to reach the market.)
- Participation on matchmaking events and organized meetings (for the discussion of participation on 2022 EIT Health Business Plan)

### Optional activities

Only the cost of those activities can be reimbursed that contributes to the development of the project to a maturity level that enables the beneficiaries to negotiate with EIT Health partners about the participation in EIT Health BP2022 Innovation calls.

## Eligible costs

- **Breakdown of the budget by project partners (not by individuals)**
- **Only actual costs are eligible**

### **Actual cost means:**

- Incurred in connection with the implementation of the project,
- Incurred during the project implementation period (project's date of entry into force - 31.12.2020).
- Identifiable and verifiable
- Comply with applicable national laws
- Reasonable, justified and comply with the principles of sound financial management

# Eligible cost categories

## Direct personnel costs

- costs for employees (salary including all social contributions, taxes, etc)
- costs for natural persons working under a direct contract
- costs of personnel seconded by a third party against payment
- costs for SME owners without salary
- costs for beneficiaries that are natural persons without salary
- personnel costs for providing trans-national access to research infrastructure

## Direct costs of subcontracting

## Other direct costs

- travel costs and related subsistence allowances
- equipment costs
- costs of other goods and services



## Evaluation and selection procedure

1. Eligibility check
2. Evaluation of eligible proposals by 3 independent experts
3. Max 100 points
4. Score will be the average of all remote evaluators' scores.

# Evaluation and selection procedure - Timeline



## Evaluation and selection procedure – Selection

- **Project excellence, Novelty of innovation and Impact (40%)**
- **Solution readiness, Feasibility and Project plan (20%)**
- **Implementation (Commercialization; Adoption) strategy (20%)**
- **Strength and commitment of team (20%)**

## Relative value of specific evaluation criteria

### 1. Project Excellence, Novelty of Innovation and Impact (40%):

- **Relevance and fit with EIT Health objectives and focus areas**
- **Soundness of the concept/idea and credibility of the proposed methodology**
- **Extent that the proposed work is beyond the state of the art, and demonstrates innovation potential**
- **Impact (benefits of your solution for society, specific health-care field and health-care system, etc.)**

## Relative value of specific evaluation criteria

### 2. Solution Readiness and Feasibility (20%)

- **Demonstrating that proposed solution has reached the desired maturity level and can be appropriately configured for the relevant domain (including solved IPR issues).**
- **Completeness of known barriers and potential risks to successful implementation,**
- **Quality and effectiveness of risk mitigation plans**
- **Market fit (i.e.: needs driven innovation, foreseen clients/buyers, etc.)**

## Relative value of specific evaluation criteria

### 3. Quality and efficiency of the implementation (20%)

- **Quality and effectiveness of the work plan (objectives, deliverables and time-frame)**
- **Appropriateness of the allocated tasks to partners**
- **Soundness of the foreseen pathway of the innovation to reach patient care on the long run.**
- **Soundness of defined Key Performance Indicators (KPIs)**

## Relative value of specific evaluation criteria

### 4. Strength and Commitment of Team (20%)

- **Plan to leverage excellence of involved partners' institutions. Partners having worked together before in similar settings will be considered advantageous.**
- **Synergies and complementarity of the team**
- **Appropriateness of the management structures and procedures**
- **Sufficiency of the team, resources for the planned development.**

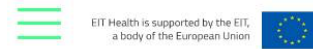
## RIS Innovation Call 2020

- **Project proposals must be submitted in English language.**
- **Project proposals must be submitted via Optimy system:  
<https://eithealth.optimytool.com/en/>**
- **FAQ will be updated with the upcoming questions**
- **10 February 2020, 12:00 CET (Budapest time)**
- **If you have further questions: [InnoStars.RIS@eithealth.eu](mailto:InnoStars.RIS@eithealth.eu)**
- **This webinar will be posted on EITHealth's website, under the download section in the Call.**



# RIS Innovation Call 2020

<https://eithealth.eu/opportunity/request-for-applications-of-ris-innovation-2020-project-proposals-for-eit-health-innostars/>



For full information and to submit an application, please download the documents below. The FAQ document will be updated each week, so we would suggest visiting our website for the newest version.

## Downloads:

- [EIT Health RIS Innovation Call 2020](#)
- [EIT Health RIS Innovation Call 2020 FAQ](#)
- [EIT Health RIS Innovation Call 2020 Financial guidelines](#)
- [EIT Health RIS Innovation Call 2020 Consortium agreement template](#)
- [EIT Health RIS Innovation Call 2020 Declaration on non conflict of interest](#)
- [EIT Health RIS Innovation Call 2020 Declaration on SME status](#)
- [EIT Health RIS Innovation Call 2020 Sugbranting agreement local Innovation Projects](#)
- [EIT Health RIS Innovation Call 2020 Template for Proposal Application](#)
- [Annotated Model Grant Agreement](#)



## Q&A 1/6

- **Is the RIS Innovation project counted to the 50k EUR limit per SME? Does it prohibit application to Headstart?** One project partner can be granted with max 50k (by all RIS funding schemes together) and the total budget of the project is 75k.
- **Will you give us the recording of this webinar?** Yes
- **Is an academic institution (medical school of a university) and a research center eligible for submitting a proposal? I.e. without an SME?** Yes, if the research center fulfills the requirements of being a non-academic partner in the collaboration.
- **Is it advantageous to have two academic partners (from the same country, within the region)?** There is no advantage, or extra score in our evaluation system.
- **Is necessary to have partners only from one country? (i.e. if Czech SME -> only Czech partners or is possible to have i.e. from Hungary)** Yes, the project leader should be from the NUT2 region where the relevant HUB is located, and the project partners can come anywhere from the given country as we are aiming to boost the local ecosystem with this call.

## Q&A 2/6

- **Can the business partner be part of a multinational company?** Yes, but only SMEs can be granted, large companies can be only project supporters, without receiving any grant.
- **Who is the leading partner? The project partners can decide which organization will take the leading role.** Please see the FAQ for the project leader responsibilities (ie. submit the application, coordinate the project, take the responsibility of execution of project)
- **Can we select the mentor?** No, InnoStars team will allocate the mentor on the proposals based on the projects 'focus area.
- **How much it will cost, 9h with your mentor?** The cost of the mentoring is included in the funding, last year it was approximately  $9 * 150 \text{ EUR} = 1350 \text{ EUR}$ . Please note that this is an estimated amount, so the price can change later.

## Q&A 3/6

- **Will the cost of the mentor be paid from the call budget (as last year)?** Yes
- **The costs incurred by the startup after the presentation of the project but before knowing the outcome are eligible?** Yes, this cost is eligible.
- **Does a college that issue associate degrees qualify as an academic institution that can be a lead partner in the project call?** Yes, it can, but please note that there should be at least one academic and one non-academic partner in the partnership.
- **How can someone submit with the proposal letters of intent or support? Does the submission platform provide this option?** In this stage, it is not mandatory, you should sign partnership agreement if you got selected. In the proposal you should indicate the partners involved in the partnership.
- **Can you provide an example of a project that has "started IML3", e.g. in the clinical domain?** We cannot provide any example because the principle of equal treatment would be harmed.
- **Should we mark to the Members of the partnership table also the RIS HUB?** Yes
- **Can we have images in the template form?** No

## Q&A 4/6

- **What if the education institution issues academic degrees but is not necessarily dedicated to both education and research, ie. its primarily an education institution. How do you assess that they are dedicated to research?** According to the definition in the Call document, an academic institution is an educational institution dedicated to education and research, which grants academic degrees. Therefore there need to have research activities at the institution beside education.
- **How are RIS Innovation Call 2019 and RIS Innovation call 2020 different? please respond with example?** RIS Innovation Call 2019 and RIS Innovation Call 2020 are different calls, not different cut-off dates of the same call. Therefore, they are different. Please use the Call 2020 only as a reference.
- **Are actual product R&D activities eligible?** Please see the definition of optional eligible activities and eligible costs and cost categories in the Call document. If your planned activities comply with those, then they are eligible. Please also see FAQ and the Financial Guideline for further information.

## Q&A 5/6

- **Is a consortium formed by a university, start-up and regional public hospital eligible for the project?** Yes, if at least one academic and one non-academic partners are there.
- **Is RIS Hub only a supporter or also can participate in costs (be given a part of grant)?** The RIS Hub cannot get funding but it can support the project.
- **Is research institution eligible to be the project leader?** Yes.
- **Will also this presentation be added on the website besides the recording?** Yes
- **Can RIS Innovation (50k EUR) project holder apply for Headstart (50 k EUR) - if successful in both then will receive 100k EUR - but this is more than maximum for all EIT Health funding opportunities for partner per year?** The maximum grant is EUR 50k in total.
- **If University of Zagreb is part RIS HUB does that mean none of the Faculties under this University cannot get money from the call?** Yes, they are affiliated entities of the Hub, therefore cannot get further grant.

## Q&A 6/6

- **So, the leading partner does not have to be the academic one, right?** Not necessarily.
- **The call funds projects that are beyond the idea stage and have already some tangible results to demonstrate. Is that correct?** Yes, selected projects will have completed IML 2 (Idea) AND has started IML 3 (Proof of Concept) at least in 2 of the 4 domains.
- **What does it mean that the local EIT Health RIS Hub has to be a partner in the partnership besides at least one academic and one non-academic partners? In context of Latvia does it mean that Stradina University MUST be one of the partners?** The RIS Hub must be a partner in the partnership, as a supporting organization without getting grant.
- **Are product development activities eligible? Please see the definition of optional eligible activities and eligible costs and cost categories in the Call document. If your planned activities comply with those, then they are eligible.** Please also see FAQ and the Financial Guideline for further information.
- **How many projects will be supported (total amount of grants)?** We are planning to grant the best 12 projects, but the exact number of selected proposals depends on our budget.