

Together for healthy lives in Europe

**Become a partner & join
the EIT Health network!**



Funded by the
European Union



EIT HEALTH

*Together for healthy lives
in Europe*

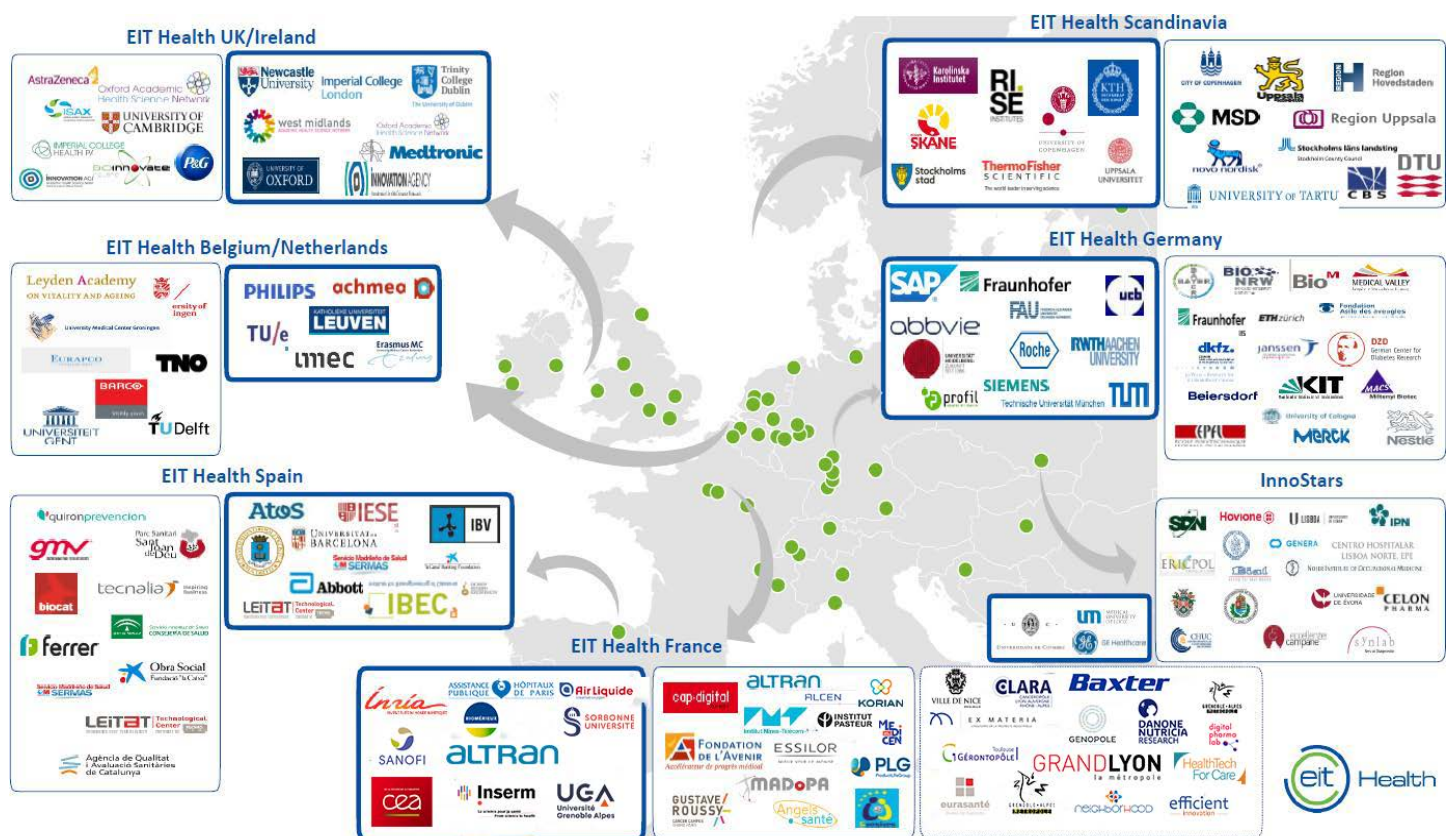
Approximately 150 world class
organisations and entities working
in collaboration to transform
healthcare in Europe.

Our Network

- We bring together and connect a vast and vibrant community to connect approximately 150 world-class organisations and entities, harnessing their combined knowledge to nurture the brightest ideas, solutions, companies and people to drive real-world innovation.
- The power of the network, which spans, amongst others, pharmaceuticals, medtech, payers, hospitals, research institutions and universities, provides a unique access to all aspects of the innovation to help overcome the challenges that can exist in taking innovation from a concept into the hands of doctors, patients and citizens.

Our presence

- EIT Health is on-the-ground across Europe. Headquartered in Munich, EIT Health has a pan-EU representation via seven regional innovation hubs, which operate as strong clusters of relevant actors collaborating as a thriving ecosystem.
- The InnoStars cluster brings together organisations from more progressive regions where the overall pace of innovation is more moderate. In addition, EIT Health has expanded the community's presence with a Regional Innovation Scheme, as well as further hubs in the United States and Israel, which connect innovators across Europe to other key thriving ecosystems beyond the EU.



NETWORK PARTNERS



Be part of our EIT Health Community

- ✓ Be informed about EIT Health and EIT Health France initiatives and activities
- ✓ Be invited to the French Partners Assembly without right to vote
- ✓ Get to know EIT Health and how it functions before applying as Associate or Core partner



Improve your image & visibility

- ✓ Benefit from EIT Health network and access qualified meetings with EIT Health partners
- ✓ Be visible at the European level by being referenced on the EIT Health website and Intranet
- ✓ Have EIT Health support for information dissemination and communication in France and in Europe
- ✓ Use EIT Health & EU flag logos for your communications



Fees & Funding

50K€

Participate in collaborative projects as an external project partner and be eligible to maximum €50.000 EIT Funding per year

5K€

Annual membership fee to join the EIT Health community as a Network Partner



Network Partners should fit **at least 1** of these criteria

- ✓ Have relevance for EIT Health by organising networks/services that support its activities or by providing relevant input on societal needs
- ✓ Be proposed as Network Partner by one of the Regional Office / InnoStars authority
- ✓ Have a connection to EIT Health at the EU level by being proposed by at least 2 Core Partners from different Regional Offices

Get to know our French Network Partners and become one of them!



Up & Down Grading

Lead your own projects.
Gain the right to have
Linked Third Parties.
Upgrade your limit funding.

Lose all the rights that
you have in the EIT Health
community.

ASSOCIATE PARTNERS



Be part of our EIT Health Community

- ✓ Be informed about EIT Health and EIT Health France initiatives and activities
- ✓ Be invited to the French Partners Assembly with one voting right
- ✓ Participate in the Strategic Orientation Committee
- ✓ One Associate representative per Regional Office / InnoStars is invited to vote during the annual Partner Assembly



Improve your image & visibility

- ✓ Benefit from EIT Health network and access to qualified meetings with EIT Health partners
- ✓ Be visible at the European level by being referenced on the EIT Health website and Intranet
- ✓ Have EIT Health support for information dissemination and communication in France and in Europe
- ✓ Use EIT Health & EU flag logos for your communications



Fees & Funding

350K€

Participate in any type of project or activity and be eligible to receive a maximum of €350.000 EIT Funding per annual Business

30K€

The annual membership fee to join the EIT Health community as Associate Partner is €30.000



You are allowed to have a **maximum of 4 Linked Third Parties**. This will allow you to reinforce your workforce and expertise for your projects.



Associate Partners should fit all of these criteria

- ✓ Excellence and innovation capacity
- ✓ Complementary to the existing EIT Health Partnership with overall balance between academic & non-academic partners
- ✓ Potential to contribute their own resources

Get to know our French Associate Partners before becoming one of them!



Up & Down Grading

Upgrade your funding limit
Gain the right to have more
Linked Third Parties
Gain even more voting rights

Reduce your limit funding
You cannot lead projects
anymore
Lose right to vote
Once you downgrade you
cannot upgrade again for 2
years.



CORE PARTNERS



Be part of our EIT Health Community

- ✓ Be informed about EIT Health and EIT Health France initiatives and activities
- ✓ One seat on the French Strategic Orientation Committee
- ✓ Double voting rights at the French Partner Assembly
- ✓ One voting right at the European Partner Assembly



Improve your image & visibility

- ✓ Benefit from EIT Health network and access to qualified meetings with EIT Health partners
- ✓ Be visible at European level by being referenced on the EIT Health website and Intra-net
- ✓ Have EIT Health support for information dissemination and communication in France and in Europe
- ✓ Use EIT Health & EU flag logos for your communications



Fees & Funding

5%€

Lead any type of project or activity and be eligible to receive a maximum of 5% of the overall EIT funding triggered per annual Business Plan (this limit has never been reached until now!)

75K€

Annual membership fee to join the EIT Health community as Core Partner is €75.000



You are allowed to have a maximum of 10 Linked Third Parties (6 are included in your fees, from 7 to 10 you need to pay additional €15.000 per LTP per year)



Core Partners should fit *all* of these criteria

- ✓ You have significant and relevant activity at an international level in the EU and a clear motivation to engage in EIT Health
- ✓ Excellence and innovation capacity
- ✓ Complementary to the existing EIT Health Partnership with overall balance between academic & non-academic partners
- ✓ Potential to contribute their own resources

Get to know our French Core Partners before becoming one of them!



Up & Down Grading

You are already at the top level!

Reduce your limit funding
Reduce your voting rights
Once you downgrade you cannot upgrade again for 2 years.

LINKED THIRD PARTIES Q&A



What is a linked Third Party & its benefits?

Your Linked Third Parties may participate in EIT Health projects and activities with the same rights and duties as partners. This allows partners to mobilize more widely their own organization through structures that are directly related to them (subsidiaries, or invested companies for example) or have close legal links with them (joint research unit, or strategic collaboration agreements for example).



Does having LTPs change funding limits?

No, the funding limits are still the same which means that the sum of the EIT funding received by the Associate Partner and its LTPs can not exceed €350.000. The sum of the EIT funding received by the Core Partner and its LTPs can not exceed 5% of the total funding of the annual Business Plan allocated to EIT Health.



Who is eligible to have Linked Third Parties?

Only Associate and Core Partners are allowed to register Linked Third Parties. Please check the page for each partner to know how many LTP you are allowed to have.



Can you have international LTPs?

EIT Health partners can have international LTPs in other Regional Offices. LTPs located in countries that are not covered by any office (for example, the United States) are attached to the same Regional Office as the EIT Health Partner.



Do you need to pay fees to register LTPs?

Associate and Core Partners both have the right to a different maximum number of LTPs included in their membership fee: 4 for Associate Partners and 6 for Core Partners. However, Core members are allowed to register 4 additional LTPs by paying an additional €15.000 per LTP and per year.

Get to know our French LTP before becoming one of them!

LTPs Registration process

Final registration process with EIT

Submission to the Partnership Manager at EIT Health headquarters who coordinates the process with EIT

Authorization to apply by the Regional Office Managing Director

Authorization to apply by the Regional Office Managing Director

Official application to the Managing Director of EIT Health France by the Associate/Core Partner on behalf the prospective LTP*

STATUS APPROVAL PROCESS

Learn about the process of joining EIT Health and becoming a Network, Associate or Core Partner.

How to become a Network Partner



How to become a Core or Associate Partner

1



The organisation expresses its interest in becoming an Associate or Core Partner to the Regional Office Managing Director.

2



The Regional Office Managing Director recommends the new partner's accession justified by defined criteria.*
The Managing Board Europe discusses the application and communicates its recommendation to the Supervisory Board.

3



The Supervisory Board France approves.

4



Formal application is made to the Supervisory Board Europe for final decision. The registration process with EIT starts after of its validation.

Up & Downgrading Process



Partners have the option to change status on a yearly basis. The notice period for a change between Associate & Core is **3 months before the end of each calendar year.**



The process can only be approved if the Member meets all criteria.*



The up and downgrading process is the same as the one to become an Associate or Core Partner. The status change requires an Application to the Supervisory Board.



An upgrade **is not possible within a period of 2 years after a downgrade.**

*Consult the criteria to become Network, Associate and Core Partners.

www.eithealth.eu

EIT Health France

contactfrance@eithealth.eu

@EIThealth_FR

2020 CLC team contacts:

Managing Director

jean-marc.bourez@eithealth.eu

Innovation

robin.griscelli@eithealth.eu / alexis.pacquit@eithealth.eu

Education

claire.nassiet@eithealth.eu

Business Creation

anais.delicourt@eithealth.eu / ipshita.singh@eithealth.eu/
heloise.priou@eithealth.eu

Operations

albenasaynova@eithealth.eu /
noeline.mpongo@eithealth.eu / hillary.francisco@eithealth.eu

Venture Centre of Excellence (VCoE)

isaac.middelmann@eithealth.eu / nuno.viegas@eithealth.eu
marie.agopian@eithealth.eu / ana.barrenechea@eithealth.eu

Patient & Citizen engagement

albane.pariset@eithealth.eu

External Affairs

jerome.fabiano@eithealth.eu / martina.blahova@eithealth.eu

Communication

martina.cortini@eithealth.eu



Funded by the
European Union