

HOW TO WORK WITH EIT HEALTH INNOSTARS

BENEFITS FOR NATIONAL AND REGIONAL
PUBLIC ADMINISTRATION





Invitation Balázs Fürjes

”

EIT Health, a Knowledge and Innovation Community operating under the umbrella of the European Institute of Innovation and Technology (EIT), has been supporting the transformation of regional healthcare systems and the launch of healthcare innovation for the last eight years.

We work closely with local authorities and national government institutions to strengthen the biomedical and digital health sectors and halt the brain drain. Together we work on boosting new start-ups creation, playing an important role in economic growth. Our mission, especially here in Central, Eastern and Southern Europe, is clear: to close the innovation gap, strengthening local assets and guiding safe, sustainable implementation of the newest approaches and tools. As the biggest and the trusted network of innovators in Europe, we have the broadest pipeline of best practices, lessons learnt and experience that can be tapped on a regional basis.

Our mission is also to help innovators convert their break-through research into valid products and solutions, able to support medical and healthcare systems in providing better diagnostics, treatment and prevention for all citizens.

Thanks to the EIT Regional Innovation Scheme, the EU instrument that focuses on the development of regional ecosystems, we have a broad portfolio of success stories in 14 regions spanning the Baltics, Central and Eastern Europe, as well as the Southern regions.

Through our own validated education, innovation and acceleration programmes, developed with top European organisations and institutions, we have already supported the creation of many local start-ups and innovation consortia operating within so-called Knowledge Triangles, as well as supporting the development of national policies, for example in the field of AI in healthcare.

Let's explore potential synergies together!

BALÁZS FÜRJES,
GENERAL DIRECTOR
EIT HEALTH INNOSTARS

Who we are

EIT Health was established in 2015 as a Knowledge and Innovation Community (KIC) of the European Institute of Innovation and Technology (EIT).

Our vast community, including approximately 150 world-class partner organisations, works across borders to connect the three worlds of business, research and education. We call this meeting point the Knowledge Triangle because it's where life-changing innovation happens. Europe faces a turning point in health. The COVID-19 crisis has placed unprecedented pressure on European healthcare systems, calling for innovative thinking and ways of partnering to face the immediate challenges of the pandemic as well as the future recovery.



EIT Health together with a wide network of EU institutions and bodies are taking resolute action to arm health services with better tools to navigate the pandemic and reduce its impact on European citizens. Throughout the pandemic, our network has been fighting COVID-19 on the front lines; from the development of mobile phone technology that uses artificial intelligence to help clinicians monitor COVID-19 patients, to research into the detection of COVID-19 in wastewater to create early-stage warning systems, until a vaccine was secured.

Our work goes beyond conventional approaches to disease management and disease prevention. We are building and growing businesses to create products and services that progress healthcare in Europe, while strengthening our economy. We empower regions to be more innovative and competitive. We equip talent pool with the new skills that change the mindset and approaches towards innovations. We are transforming the way healthcare is delivered in Europe, and we are changing lives, making new leaps in healthcare that put the patient front and centre.

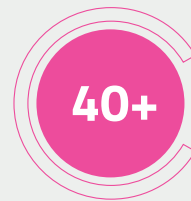
Our Impact



start-ups supported
(2016-2020)



graduates and
professionals trained
(2016-2019)



products and
services launched
(2016-2020)

EIT Health in Central, Eastern and Southern Europe

EIT Health InnoStars is one of the seven geographical areas of EIT Health. It covers half of Europe, including Hungary, Italy, Poland and Portugal, as well as additional regions included in the EIT Regional Innovation Scheme (EIT RIS) – Croatia, Czechia, Estonia, Greece, Latvia, Lithuania, Slovakia, Slovenia, and Romania. The EIT RIS was created by the EIT to close the gap between regions that are leaders in innovation and those which are still progressing. The purpose of the programme is to promote healthcare innovation in countries with modest or moderate innovation capacity.

Core Partners:



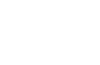
GE Healthcare



Associate Partners:



Linked/Affiliated Party:

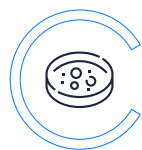


EIT Health Hubs:



EIT Health Partners - expertise in all areas of healthcare innovation

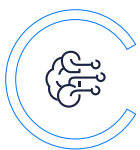
PHARMA



MED-TECH



DIGITAL



56

INDUSTRIES



44

UNIVERSITIES



14

HEALTHCARE
PROVIDERS



18

RESEARCH
CENTRES



10

PAYERS



11

INCUBATORS
& CLUSTERS



6

CITIES
& REGIONS



Support for national and regional public administration



Providing a resource-efficient way to transform healthcare systems through innovation and trusted approaches.



Strategy consulting on building a pipeline of Innovation consortia, engaging stakeholders from different environments (Knowledge Triangle) and transferring technologies.



Guidance in the Horizon Europe, HEI capacity building initiatives and EIC set-up in the field of health, active ageing and well-being.



Implementation of education curricula in the field of e.g. AI in healthcare.



Access to trusted data and best practices regarding innovation from other EU regions.



Leading national acceleration programmes for start-ups, as well as initiatives leveraging entrepreneurship, innovation development, technology transfer, and activation of seniors and citizens in general.



Faster access to the newest healthcare innovations projects developed within the EIT Health network.



Providing ready-to-go technology assessment methodology to validate healthcare start-ups and scientific teams.



Preparing recommendations, white papers and reports regarding healthcare systems and innovation.



Fast access to the best practices and lessons learnt in other authorities in EU regions, as well as to the Think Tank platform.

AIM OF THE PROGRAMME

EIT Jumpstarter is a pre-accelerator programme for innovators in the healthcare, agri-food, raw materials, energy, urban mobility and manufacturing industries specifically developed to answer the need of the innovation ecosystem in Emerging Europe: to help Governments fight brain-drain by upskilling the talent pool, embracing a more entrepreneurial mindset-change and encouraging the creation of local businesses, contributing to creation of jobs & post-covid recovery in the mid-term.

The programme contributes to boosting innovation and entrepreneurship within the Central, Eastern and Southern European regions by validating innovative solutions and connecting them with the demands articulated by industry.

TARGET GROUP

Scientific project teams, innovators, scientists, PHD students or master's students. EIT Jumpstarter is ideal for teams with innovative business ideas who want to transform these into real business.



WHAT DO WE DO?

EIT Jumpstarter is a safe environment for researchers to test the business need for their project, and with the contribution of best-in-class experts, the creative community and unique know-how, we support researchers bringing their project results on the market.

We help them build and validate a viable business model around their innovative product or service idea, and if their business idea proves sustainable, we encourage them to register their company.

We introduce teams to partners, investors, regulatory bodies and companies that can manufacture their products, become their first buyer, or provide a test site. We put them in contact with major innovation hubs in Europe, which is important when they want to enter foreign markets.

PARTICIPANTS:



POWERED BY:



AWARDS:



WINNER
Best Association Training Initiative



A Winner of Young Empowerment Initiative of the Year 2020

PARTNERS OF THE PROGRAMME:

EIT Communities' large industrial Partners, such as:



SIEMENS

PHILIPS



BOSCH

Nestlé



AIM OF THE PROGRAMME

EIT Health DRIVE is a training programme that ensures knowledge transfer from well-developed innovation centres to EIT Health RIS regions to strengthen local innovation capacities.

The programme aims to improve local innovation ecosystem support mechanisms and foster closer interactions between Knowledge Triangle actors in business, education and research.

TARGET GROUP

Regional ecosystem leaders and managers of innovation hubs, technology transfer managers, key opinion leaders interested in national strategies for regional development, and national and local authorities and policy-makers.

WHAT DO WE DO?

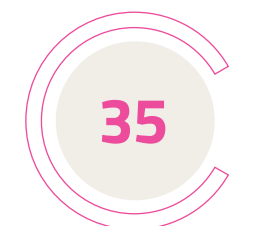
We organise a training programme for ecosystem leaders to develop regional innovation capacities. We equip representatives of EIT Health RIS regions with competencies that enable them to understand their existing system and develop a targeted improvement strategy to deploy new interventions and obtain tangible results in the innovation ecosystem year by year. Participants focus on better understanding the functioning of innovation ecosystems in general, and particularly the characteristics of the one they represent. Using a design approach, they develop a tailor-made strategy and concrete action plan to execute in the coming years.

Attendees work in four focus areas, to:

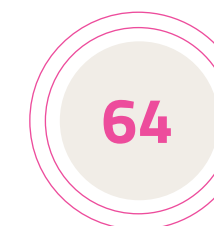
- engage clinical stakeholders in innovation,
- improve processes related to start-up acceleration,
- drive student entrepreneurship,
- develop technology transfer capabilities.



PARTICIPANTS:



key opinion leaders
from 14 regions trained



ecosystem leaders
participated

PROGRAMME ELEMENTS:

Inspirational Talks

Online discussions with top-notch experts from developed innovation hubs who openly share their lessons learnt, and their successes and failures.

MasterClass

Online meetings to share explicit know-how about specific topics of innovation ecosystem development. Hands-on knowledge from experts in the building of innovation capacity.

POWERED BY:

RIS Academy



AIM OF THE PROGRAMME

RIS Academy is our online education and collaboration community platform.

Since spring 2020, and due to the recent pandemic situation, EIT Health has decided to turn towards online education solutions. Our aim is to create a safe, stable environment to foster our partners' online education activities, and help the transition from offline to online education.

WHAT DO WE DO?

We engage learners from across society through educational programmes to enable continuous innovation in European healthcare. We bridge the gap between academia and enterprise to upskill professionals in new innovative techniques. We have educational programmes to suit each type of learner.

OUR IMPACT



€ 40 mln

investment
attracted



more than
30 000

students in the
period 2016-2019



approx.
100

MSc and PhD
graduates



more than
100 000

engaged
citizens



StarShip

AIM OF THE PROGRAMME

StarShip is an EIT Health educational initiative conducted in collaboration with leading European healthcare industry partners. Using a blend of different educational approaches – including elements from the Stanford Biodesign methodology – StarShip is a unique opportunity for participants to be involved in needs-driven life science innovation, working together with other innovators in highly skilled multidisciplinary teams, in close collaboration with Europe’s leading healthcare industry actors and EIT Health Partners.



TARGET GROUP

Individuals who have a strong interest in the health sector with a background in one or more of the following areas:

- Medicine
- Life science
- Engineering (biomedical, mechanical, or other)
- Economics or business management
- Public policy
- Design

or who hold a Bachelor’s, Master’s or PhD degree in one of the above mentioned fields.

WHAT DO WE DO?

- We send talents to clinics and HCPs (healthcare providers).
- We compare needs with industry offerings.
- We provide top solutions to public authorities ready for implementation.
- We facilitate credible final proposals, because the process is transparent.
- We train fellows to learn to apply a proven and action-based approach to find solutions to challenges, verifying user requirements, and identifying unmet health care needs.
- We facilitate participants to work in multidisciplinary teams, where fellows develop responses to critical real time problems, validate them in real health care settings, and produce solutions that will have an impact.
- We provide teams with coaching and mentoring by the StarShip academic team and designated industry mentors.

PARTICIPANTS:



POWERED BY:



PARTNERS OF THE PROGRAMME:



EIT Regional Executive Academy

AIM OF THE PROGRAMME

The aim of the programme is to provide better connections between EIT communities and local authorities, as well as to raise awareness of possible synergies and positive outcomes of running joint innovative activities at the local level.

Regional Executive Academies will be developed into local platforms for periodic interactions discussing joint EIT-KIC* approaches to synergies with European Structural and Investment Funds (ESIF) aimed at regional priorities within the new Multiannual Financial Framework (MFF).

TARGET GROUP

Representatives of regional-level administration, representatives of public sector/regional authorities in EIT RIS countries with increased awareness of EIT-KIC* strategic innovation agendas, analysis of the project funding opportunities (to benefit from synergies between Horizon Europe and European Structural and Investment Funds) in their region and identification of potential collaboration with Knowledge Innovation Communities.

* Knowledge Innovation Communities



WHAT DO WE DO?

We train representatives of regional level administration from EIT RIS countries** to ensure:

- better alignment of regulations and support programs with global trends in the respective industries through communication with industry experts and cross-regional collaboration between authorities;
- better understanding of the complexity of innovation ecosystems, how to effectively plug the local ecosystem into international networks, and to raise awareness of typical obstacles to the market introduction of innovations;
- enhanced alignment between regional priorities and KICs' EIT RIS activities, especially in the context of national/regional smart specialisation strategies;
- dialogue with local government stakeholders from EIT RIS countries, contributing towards the further development of EIT Communities' activities for EIT RIS regions;
- development of regional and international contact networks between science, industry, government and NGOs.

By enriching the international collaborative networks of EIT RIS regions' governments and regulators, the Academy strengthens their innovation ecosystems and increases the competitive advantage of local initiatives in country- and European-level programmes.

The programme offers an important contribution towards supporting Responsible Research & Innovations by the EIT, particularly as the regional authorities gain direct access to good practices and are able to replicate them in their respective territories.

** <https://eithealth.eu/in-your-region/ris/>

PARTICIPANTS:



POWERED BY:



Israeli Outreach Programme

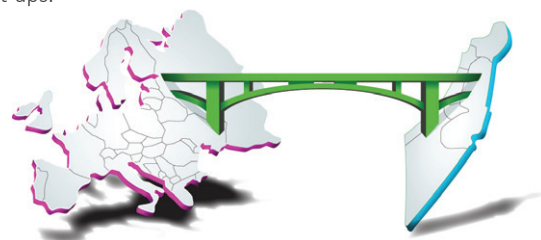
AIM OF THE PROGRAMME

EIT Hub Israel is an outreach location of the European Institute of Innovation and Technology.

The hub creates synergies between the EIT community and the Israeli innovation ecosystem to support the growth of innovative start-ups and increase the number of EU-Israel and cross-KIC collaborative projects. EIT Hub Israel is part of an international cooperation project, including parallel hubs in the leading ecosystems of: **Silicon Valley and China**. This allows the EIT access to the latest knowledge and the best talent worldwide, and creates business opportunities in new markets

TARGET GROUP

European Ecosystem Managers, European corporates, small and medium-sized enterprises (SMEs), European diplomats based in Israel, and European and Israeli start-ups.



WHAT DO WE DO?



Innovation ecosystem development training for European Ecosystem Managers



Technology scouting and open innovation for European corporates



A variety of training and workshops based on Israel's unique value proposition, by demand for interested organizations



Corporate and open innovation capacity building for small and medium-sized enterprises (SMEs)



Full immersion into the Israeli ecosystem for European diplomats based in Israel



Globalization support and market penetration bootcamp for advanced European and Israeli start-ups

IMPACT:

166

Professionals trained

800

Citizen engagement participants

16

Disrupt Me beneficiaries

104

EU-IL organizations engaged

POWERED BY:



Reviews



”

“Participation in the EIT Health DRIVE training program enabled the Medical University of Gdańsk to exploit the experiences of people from institutions advanced in technology transfer.

The Gdańsk EIT Health Hub focuses on transfer mechanisms that will allow increased interaction among stakeholders in the Pomerania region. One of our goals is to build and sustain an innovation ecosystem that will include universities, businesses and local policymakers.”

KATARZYNA WALIGÓRA-BOREK, PHD
ACTING DIRECTOR OF THE TECHNOLOGY TRANSFER OFFICE,
MEDICAL UNIVERSITY OF GDAŃSK, EIT HEALTH HUB

”

“The DRIVE programme immediately involved us right away in a variety of initiatives leading us to a stronger health innovation ecosystem. Within a few months, we had carried out significant analytical work, helping us to understand our ecosystem even better, to identify our strengths and weaknesses, and to acknowledge what further actions are necessary to build on the results of the 5-year strategy. We’re particularly glad that the strong team from EIT Health and Delft University were always available and happy to help with all our questions.”

IRINA SEMEŠKO
PROJECT MANAGER, DEVELOPMENT DEPARTMENT AT LITHUANIAN
UNIVERSITY OF HEALTH SCIENCES, EIT HEALTH HUB IN LITHUANIA
PARTICIPANT OF THE EIT HEALTH DRIVE PROGRAMME

Inspirational Talks

”

“Besides a dedicated online learning platform, the programme consists of two new formats for sharing knowledge.

The participants will be able to learn from the innovation ecosystem leaders during the series of ‘Inspirational Talks’. The online meetings will host top quality experts from TU Delft, as well as local innovation leaders who will share their best practices.”

NÓRA FÉLEGYHÁZI,
RIS ECOSYSTEM DEVELOPMENT MANAGER



”

“We can name many benefits from the EIT Jumpstarter – we have accomplished several achievements, made so many contacts, and all the mentoring that we had during these months has been invaluable – and, of course, the prize that will help us move forward.”

MIGUEL CERQUEIRA, 2B NANOFOOD



EIT Health InnoStars

Contacts



Poland
Mikołaj Gurdała
mikolaj.gurdala@eithealth.eu



EIT RIS
Mónika Tóth
monika.toth@eithealth.eu



Portugal
Miguel Amador
miguel.amador@eithealth.eu



Italy
Chiara Maiorino
chiara.maiorino@eithealth.eu



Hungary
Zsolt Bubori
zsolt.bubori@eithealth.eu

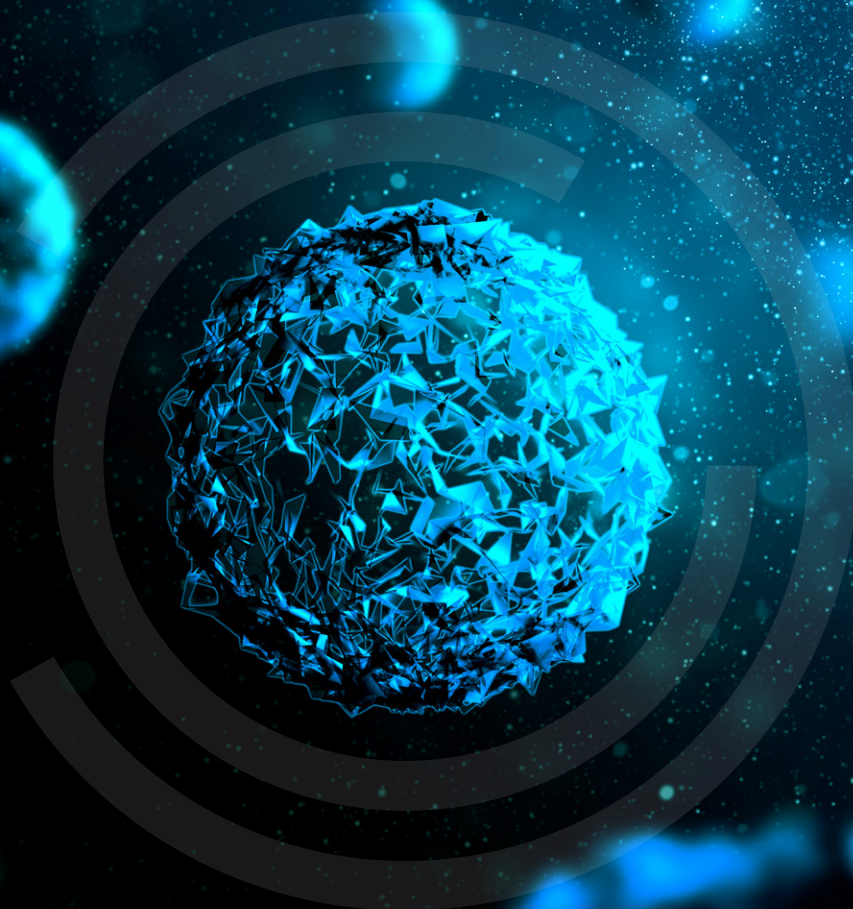


General inquiries
innostars@eithealth.eu





Funded by the
European Union



www.eithealth.eu
www.eitjumpstarter.eu
www.innostarter.eithealth.eu

#healthinnostars
#EITHealth

