

A group of four people (three women and one man) are gathered around a table in a modern office or meeting room. They are looking at a laptop screen. In the background, a large projection screen displays mathematical graphs. A semi-transparent image of a man in a white shirt is overlaid on the right side of the image. The overall atmosphere is professional and collaborative.

Life-changing ideas
become reality right here



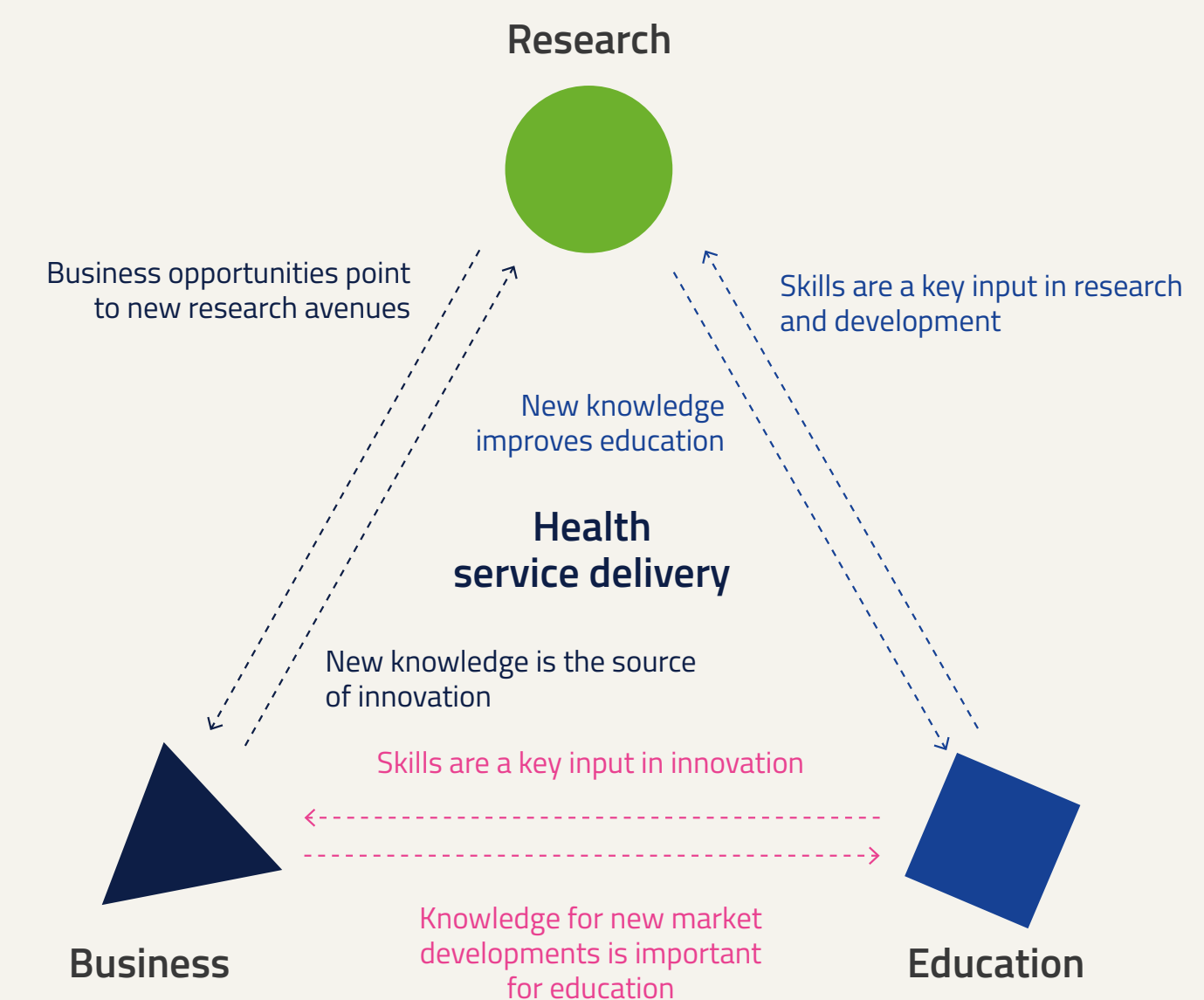
We are EIT Health

We are a vast, vibrant community of world-leading health innovators, backed by the European Union. Our network is made up of approximately 150 partners, as well as thousands of start-ups and entrepreneurs.

We work across borders and disciplines to harness the brightest minds in healthcare from the worlds of business, research, education, and healthcare delivery, to answer some of the biggest health challenges facing Europe.

Through this unique collaborative approach, we're empowering a network of innovators to overcome barriers, challenge convention, and take action.

Why? To put life-changing products and services into the hands of those who need them.





Our mission

Europe faces a turning point in health.

Since 1900 the global average life expectancy has more than doubled and is now above 70 years.¹

This is a tremendous advance for humankind and has contributed to economic growth and prosperity. However, these extra years are not all spent in good health, and this has led to significant societal challenges.

We believe that a focus on preventative, high value, and people-focused innovation will help us to live longer, healthier lives, make our healthcare systems more sustainable, and further strengthen our economy.

Our mission is to enable longer and healthier lives for European citizens

1. Roser, M., Ortiz-Ospina, E. and Ritchie, H., 2022. Life Expectancy. [online] Our World in Data. Available at: <<https://ourworldindata.org/life-expectancy>> [Accessed 20 April 2022].

Our focus areas

We've identified six of the most urgent healthcare challenges facing society, and we're dedicated to finding solutions that will strengthen healthcare systems, promote better health of citizens, and contribute to a sustainable health economy in Europe.



Care pathways are essential to support patients from diagnosis to treatment. Yet current strategies focus heavily on the treatment phase.

We are extending care pathways to provide end-to-end care before the onset of disease through to end-of-life support. And we are optimising long-term care to enable people with chronic conditions to live as well as possible.



We believe in revolutionising healthcare systems in Europe – and we're uniquely placed to help make it happen.

We bring innovators together to overcome fragmentation across healthcare delivery and create a sustainable healthcare system that can support an ageing society.



Data promises extraordinary possibilities for healthcare. It provides rich insight into diseases and can deliver prediction models for early diagnosis and enhance treatment.

We want to unlock the wealth of healthcare data available across Europe to improve the lives of patients and citizens.



Healthcare delivery is changing, shifting from the hospital and into the home.

We are enhancing the integration of health and social care which is vital in ensuring European citizens receive optimal treatment while reducing pressure on hospital services.



Work-related stress affects one in four European employees,¹ leading to significant levels of absence – this is just one of the many work-related conditions we need to address.

We want to improve workplace health through better education, improved personal awareness and access to healthy choices.



Patients and citizens in Europe are at the heart of what we do.

We want to support them in their own lifestyle changes with tools and incentives that help protect their health – by preventing early ageing and reducing disease and disability.

1. Osha.europa.eu. 2022. Psychosocial risks in Europe: Prevalence and strategies for prevention | Safety and health at work EU-OSHA. [online] Available at: <<https://osha.europa.eu/en/publications/psychosocial-risks-europe-prevalence-and-strategies-prevention>> [Accessed 5 April 2022].



Our network

We are a vast and vibrant network of approximately 150 world-leading partners, as well as thousands of start-ups and entrepreneurs. We draw on this diverse, combined knowledge, working across borders to develop the best solutions.

This network – which spans pharmaceuticals, medtech, payers, hospitals, research institutions and universities – includes every piece of the innovation jigsaw. This means we can help overcome the barriers to innovation at every step, from concept to life-changing product or service.

Our Alumni

Anyone who participates in an EIT Health programme, course, or has received EIT Health funding, including all EIT Health Partners, can join our Alumni network. Membership provides a multitude of benefits, including job opportunities and training.

Our presence

EIT Health has pan-EU representation via our Central Office and eight regional innovation hubs, which operate as strong innovation clusters to drive our thriving ecosystem.

The InnoStars hub brings together organisations from more progressive regions where the overall pace of innovation is more moderate.

EIT Health has expanded the community's presence with an EIT Health Regional Innovation Scheme across 13 countries across Central, Eastern and Southern Europe. EIT Health also leads the development of the EIT Hub in Israel, which connects innovators across Europe to other key thriving ecosystems beyond the EU.



Our partners

Core partners

EIT Health is Europe’s largest network of healthcare innovators, connecting approximately 150 leading partner organisations from business, education, research, and healthcare delivery.

Innovation flourishes best when the right people are brought together to share expertise, which is why our partners are so vital to the work we deliver. Through our unique collaborative approach, we are empowering our network of innovators to put cutting-edge products and services into the hands of those who need them the most.

Interested in becoming a partner?
Please complete the form on the [partner section of our website](#).





Our partners

“Partners are essential as nobody has the skills to face all the challenges of building innovative products and entering the market on their own. The EIT Health community has helped us foster cross-border cooperation in a major way.”

MARC JULIEN, DIABELOOP, AWARD-WINNING EIT HEALTH-SUPPORTED START-UP

Associate partners





Product and service development



We have launched more than 68 solutions in areas of great unmet need such as cancer, COVID-19 and diabetes.

We initiate new projects that strive to answer the biggest healthcare challenges facing Europe.

We define a problem or gap in the healthcare ecosystem, and work with our partners to build a task force of world-class experts to build, test and, ultimately, bring a commercially viable product or service to market.

Our unique approach comes to life here – our vast network means we can bring together the brightest minds across disciplines and regions so that the right people are in the driving seat.



Programmes

Our programmes are designed to strengthen the healthcare innovation ecosystem so that we can be truly transformational as a collective. We provide continuous learning opportunities for healthcare stakeholders, and support businesses to build, grow and expand.

Our diverse offering gives students, healthcare professionals and entrepreneurs the opportunity to learn new skills, connect with our vast network of experts, access finance, enter new markets and more.

By providing support at every stage of the entrepreneurial journey, we empower the brightest minds to develop their ideas and access practical resources to help their business grow.



Education



We have educated tens of thousands of professionals and graduates through our diverse portfolio of education programmes, which bridges the gap between academia and enterprise. By upskilling healthcare innovators with the knowledge and skills needed to solve Europe's biggest health challenges, we are helping to strengthen Europe's innovation ecosystem.

In 2021 we launched two unique programmes to improve medical students' and healthcare experts' understanding of Artificial Intelligence (AI): HelloAI RIS and HelloAI Professional. To date, HelloAI has prepared 1,750 professionals to embrace AI in healthcare.

A background image showing several hands of different skin tones high-fiving in a celebratory gesture. In the background, a man is smiling and looking up.

Accelerator



Since our launch in 2016, we have supported more than 1,355 start-ups across Europe who have attracted over €522M in investment.

Our unique portfolio of business creation programmes catalyses growth to strengthen the healthcare innovation ecosystem. We work with entrepreneurs, start-ups, and scale-ups to bring life-changing products and services to market faster, create new jobs and boost the European health economy.

By activating our vast network of world-leading partners we link entrepreneurial businesses to the knowledge and resources they need to attract investment and grow.

THINK<TANK<



World-class ideas are wasted if the world isn't ready for them.

The EIT Health **Think Tank** – our thought leadership forum – brings healthcare leaders together to prepare the ground for life-changing innovation and identify the next opportunity for a step-change in how healthcare is delivered.

We collaborate across disciplines and borders to explore and assess the most pressing topics impacting healthcare innovation today.

Interested in getting involved? Our Think Tank is open to new ideas and collaboration opportunities.

Please contact thinktank@eithealth.eu to learn more



High value care

High Value Care is a strategic initiative which supports healthcare providers and professionals to transform care towards outcomes that have the highest impact and are of most importance to patients.

High value care (HVC) refers to the restructuring of healthcare delivery towards measurable outcomes that have high impact and matter most to patients.

This requires standards to be set for measuring the right outcomes and incentivising the healthcare industry to pay for outcomes rather than services.

We provide case studies and resources to help healthcare professionals and decision makers to understand and adopt the measurable patient-focused approach HVC demands.



WorkInHealth Foundation

We initiated the WorkInHealth Foundation to address the evident and growing skills and talent gaps within the healthcare industry across Europe, which threatens the sustainability and growth potential of the healthcare industry.

There are particular skillsets where new and emerging roles are leading to exponential demand, including digital, commercial, and innovation settings. By tapping into recruiters and candidates through our network, we will match talent across the sector, increasing the volume of talent in the areas of greatest demand.



Abtrace

AIDING ANTIBIOTIC PRESCRIPTION DECISIONS

The challenge

Antimicrobial Resistance (AMR) is one of the biggest threats to global health.¹ AMR is caused when certain bacteria become resistant to even the most powerful antibiotics available today as result of overuse and misuse.

A growing list of infections are becoming harder and sometimes, impossible to treat, as antibiotics become less effective.¹ This leads to longer hospital stays, higher medical costs and increased mortality.¹

The solution

Every use of an antibiotic comes with a risk that resistance might develop. Abtrace is helping to inform decision-making when it comes to clinicians prescribing the most appropriate antibiotic for each individual.

Abtrace uses artificial intelligence (AI), which can analyse and aggregate vast

sets of global antibiotic prescription data quickly in a simple software tool. It provides a recommendation for which, if any, antibiotic should be used.

The team

The founders of Abtrace feel passionately about contributing to the fight against AMR, having seen the human cost of drug resistant organisms first hand in both their working and personal lives.

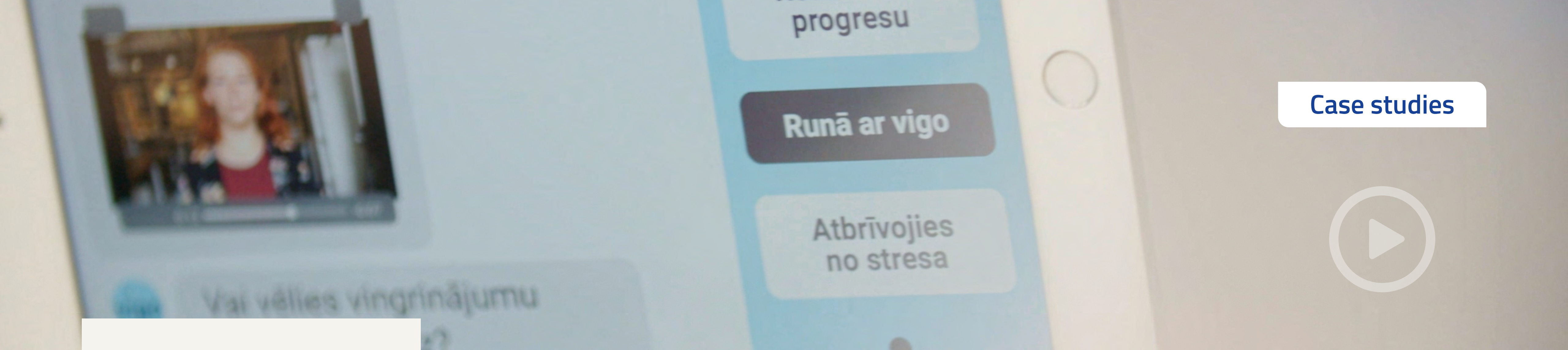
As an EIT Health Wild Card project, Abtrace received €2m funding, and access to the network. Plus it was immersed into an incubator to develop the business and bring it to market.

By helping clinicians to prescribe the most appropriate antibiotic for each individual based on their healthcare needs and condition, Abtrace are tackling antibiotic overuse and misuse head-on.

Antibiotic resistance causes 25,000 deaths per year in Europe and 2.5m extra hospital days.²

1. Who.int. 2022. Antibiotic resistance. [online] Available at: <<https://www.who.int/news-room/fact-sheets/detail/antibiotic-resistance>> [Accessed 20 April 2022].

2. Centers for Disease Control and Prevention. 2019. Infographic: Antibiotic Resistance The Global Threat. [online] Available at: <https://www.cdc.gov/globalhealth/infographics/antibiotic-resistance/antibiotic_resistance_global_threat.htm> [Accessed 20 April 2022].



Case studies

Vigo

FROM EDUCATION TO INNOVATION

The challenge

As the European population ages, the burden of stroke is expected to increase significantly, posing huge challenges to limited healthcare resources.¹

Physical, psychological and economic burdens associated with stroke all require significant care, consideration and rehabilitation.

Rehabilitation has been shown to improve functional outcomes, decrease mortality and reduce the length of hospital stays.¹ But stroke survivors often require long-term rehabilitation once they have been discharged from hospital and are back at home.

The solution

Vigo uses digital technology to provide personalised rehabilitation programmes to stroke patients, providing long-term support for their physical and emotional

recovery. Vigo gives patients easy online access to different types of therapy that can guide them through their rehabilitation and overcome their anxieties.

In 2020, Vigo's solution was classified as a medical device in the European Union. And in 2021, Vigo made history by becoming the first digital therapeutic company in the Baltics to receive an official reimbursement code from the Latvian health authority.

The team

Vigo founder, Kristaps Krafte, developed his idea after completing the EIT Health IHC Master's programme. He has since added to his team and benefited from our Accelerator programme, gaining support and mentorship to speed up Vigo's time to market.

Stroke is the second most common cause of death and a leading cause of adult disability.²

1. Lui, S.K. and Nguyen, M.H. (2018). Elderly Stroke Rehabilitation: Overcoming the Complications and Its Associated Challenges. Current Gerontology and Geriatrics Research, 1–9.

2. Katan M, Luft A. Global Burden of Stroke. (2018). Seminars in Neurology. 38(2), 208–211.



Peptomyc

DISCOVERING NEW CANCER TREATMENT

The challenge

Currently, nearly nine million people die from cancer around the world each year and there is an expected 25 per cent increase in cancer cases in Europe over the next decade.¹ As such, there is a pressing need for new and novel therapies that improve treatments available to those diagnosed with cancer.

The solution

Based on the notion that the protein Myc plays an important role in cancer cells' survival and proliferation, Dr Soucek, a research scientist, found that attacking it could lead to a potential therapy for multiple types of cancer.²

Dr Soucek and her team were the first researchers to show that inhibiting Myc was feasible and has a therapeutic impact against cancer without damaging normal tissues.² This has led to the development of her company Peptomyc, focused on her pioneering Myc-inhibiting treatment.

Following their phase I trial for Myc inhibitor, OMO103, Peptomyc are seeking funds to take their novel therapy to phase II. The Spanish start-up is looking to raise 25 million euros to trial OMO103 in non-small cell lung cancer, triple-negative breast cancer and colorectal cancer, and is expected to begin in late 2022.

The team

The journey from idea to reality has required determination. Initially, Dr Soucek was advised by many not to progress beyond the proof of concept. In addition to the high costs involved, as a scientist with no experience of entrepreneurship, Dr Soucek faced difficulties securing the support she needed to start a business.

Dr Soucek's passion for fighting cancer led her to EIT Health. She attended a series of programmes that helped her gain the vital financial and business support she needed for her start-up, Peptomyc.

Since the early-stage support provided by EIT Health, Peptomyc has gone on to raise 17 million euros from private financing and six million euros from public institutions and continues to draw interest from the medical and investor communities alike.

"I don't feel alone anymore. I have support from EIT Health and we have investors in the company that believe in the project."

DR LAURA SOUCEK

1. European Commission, Europe's Beating Cancer Plan. [online] Available at: https://ec.europa.eu/commission/presscorner/detail/en/ip_21_342 [Accessed 20 April 2022].

2. Soucek, et al. (2008). Modelling Myc inhibition as a cancer therapy. Nature, 455, 679-683.



Stockholm3

TRANSFORMING PROSTATE CANCER DETECTION

The challenge

In the EU, prostate cancer is the most frequently diagnosed cancer among men¹ and kills approximately 100,000 people each year.

Currently, a blood test is used to detect an increased level of PSA, which can indicate prostate cancer. But results can be unreliable, meaning aggressive forms of prostate cancer can go undetected.

The solution

Stockholm3 is a new test that offers a more accurate indicator of prostate cancer in men. It analyses five protein markers and over 100 genetic markers and when mapped alongside clinical data, clinicians can better predict the risk of aggressive prostate cancer and whether a biopsy is needed.

Stockholm3 has been evaluated in trials amongst almost 60,000 men – creating one of the largest prostate cancer diagnosis datasets.²

The team

Stockholm3 was co-founded by Professor Henrik Grönberg, a scientist who has worked with cancer patients for 30 years. During this time, he saw many patients misdiagnosed using the PSA test.

EIT Health worked with Stockholm3 to validate the test and introduce it to the European market. Stockholm3 is available in Sweden, Finland, Norway and Denmark, with plans to launch across the rest of Europe and the world.

Launching Stockholm3 globally provides the opportunity to potentially reduce the number of men unnecessarily undergoing biopsy and treatment and identify aggressive cancers earlier, boosting survival rates and significantly reducing healthcare costs.

“EIT Health has enabled us to take the test to patients faster. Without the support from EIT Health we would not be where we are today.”

OLA STEINBERG, CO-FOUNDER
STOCKHOLM3

1. Ferlay, J., et al. (2018). Cancer incidence and mortality patterns in Europe: Estimates for 40 countries and 25 major cancers in 2018. *European Journal of Cancer*, 103, 356–387.

2. Grönberg H, et al. (2015). Prostate cancer screening in men aged 50–69 years (STHLM3): a prospective population-based diagnostic study. *Lancet Oncology*. 16(16), 1667–76.



Work with us

To learn more about EIT Health and
discover how to get involved, please visit:

www.eithealth.eu | info@eithealth.eu

